



## DOK7 Antibody

E11-11148C

**Catalog Number:** E11-11148 C**Concentration:** 1mg/ml**Swiss-Prot No.:** Q18PE1**Other Names:** Dok-7; downstream of tyrosine kinase 7**Storage/Stability:** Store at -20°C/1 year**Form of Antibody:** Rabbit IgG in phosphate buffered saline (without  $Mg^{2+}$  and  $Ca^{2+}$ ), pH 7.4, 150mM NaCl, 0.02% sodium azide and 50% glycerol.**Immunogen:** The antiserum was produced against synthesized peptide derived from N-terminal of human DOK7.**Purification:** The antibody was affinity-purified from

rabbit antiserum by affinity-chromatography using epitope-specific immunogen.

**Specificity:** DOK7 antibody detects endogenous levels of total DOK7 protein.**Reactivity:** Human, Mouse**Applications:** WB: 1:500~1:1000 IHC: 1:50~1:100

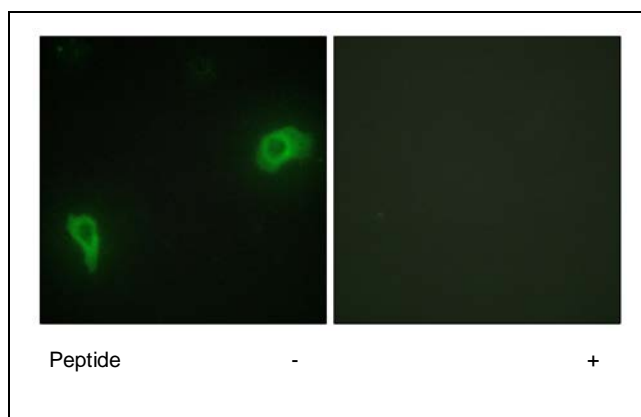
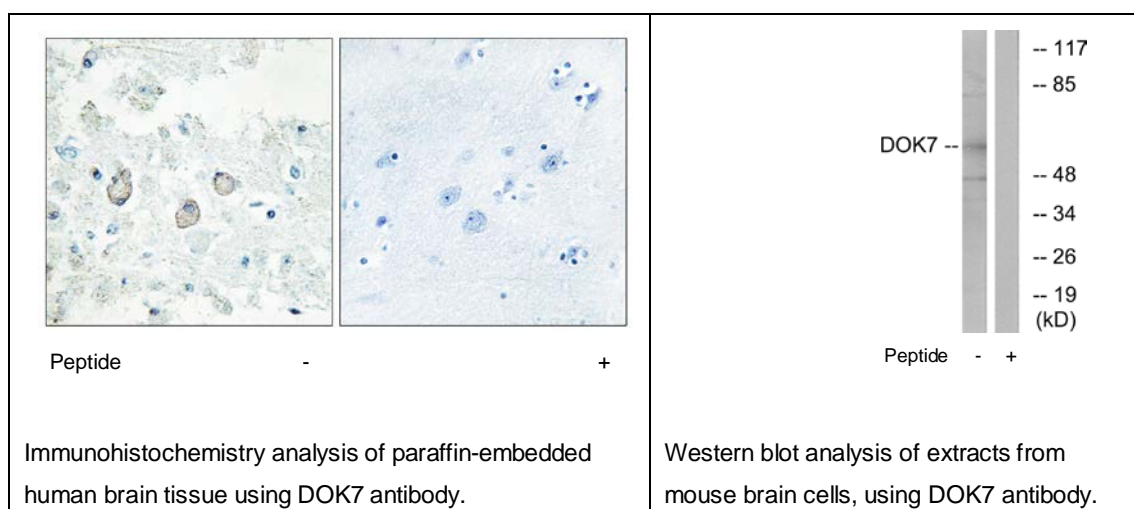
IF: 1:100~1:500 ELISA: 1:1000

**References:**

Okada K., Science 312:1802-1805(2006).

Ota T., Nat. Genet. 36:40-45(2004).

Beeson D., Science 313:1975-1978(2006).

**For Research Use Only**

Immunofluorescence analysis of HepG2 cells, using  
DOK7 antibody.