



## CDKL4 Antibody

E11-11182C

**Catalog Number:** E11-11182 C

**Concentration:** 1mg/ml

**Swiss-Prot No.:** Q5MAI5

**Other Names:** EC 2.7.11.22, Cyclin-dependent kinase-like 4, CDKL4

**Storage/Stability:** Store at -20°C/1 year

**Form of Antibody:** Rabbit IgG in phosphate buffered saline (without  $Mg^{2+}$  and  $Ca^{2+}$ ), pH 7.4, 150mM NaCl, 0.02% sodium azide and 50% glycerol.

**Immunogen:** The antiserum was produced against synthesized peptide derived from C-terminal of human CDKL4.

**Purification:** The antibody was affinity-purified from rabbit antiserum by affinity-chromatography using epitope-specific immunogen.

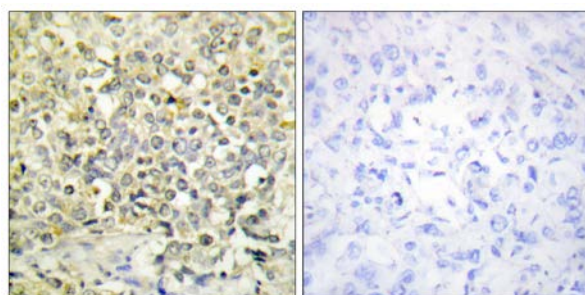
**Specificity:** CDKL4 antibody detects endogenous levels of total CDKL4 protein.

**Reactivity:** Human

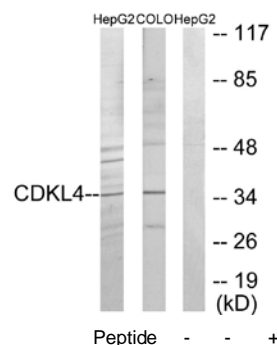
**Applications:** WB: 1:500~1:1000 IHC: 1:50~1:100  
IF: 1:100~1:500 ELISA: 1:40000

**References:**

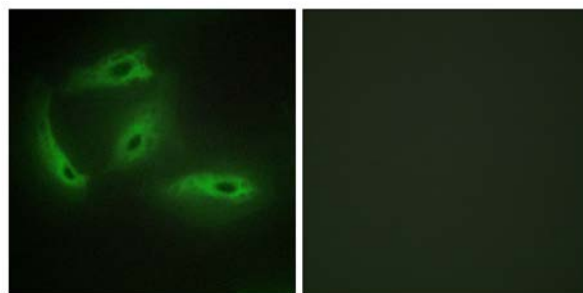
Wang P.Z., Submitted (DEC-2004) to the EMBL/GenBank/DDBJ databases.



Immunohistochemistry analysis of paraffin-embedded human lung carcinoma tissue using CDKL4 antibody.



Western blot analysis of extracts from HepG2 cells and COLO205 cells, using CDKL4 antibody.



Fluorescence microscopy analysis of cells stained with CDKL4 antibody.

**For Research Use Only**

Immunofluorescence analysis of HeLa cells, using CDKL4 antibody.