



## TTC23 Antibody

E11-11200C

**Catalog Number:** E11-11200 C

**Concentration:** 1mg/ml

**Swiss-Prot No.:** Q5W5X9

**Other Names:** TPR repeat protein 23, Tetratricopeptide repeat protein 23, Cervical cancer proto-oncogene 8 protein, HCC-8, HCC8

**Storage/Stability:** Store at -20°C/1 year

**Form of Antibody:** Rabbit IgG in phosphate buffered saline (without  $Mg^{2+}$  and  $Ca^{2+}$ ), pH 7.4, 150mM NaCl, 0.02% sodium azide and 50% glycerol.

**Immunogen:** The antiserum was produced against synthesized peptide derived from internal of human TTC23.

**Purification:** The antibody was affinity-purified from rabbit antiserum by affinity-chromatography using epitope-specific immunogen.

**Specificity:** TTC23 antibody detects endogenous levels of total TTC23 protein.

**Reactivity:** Human

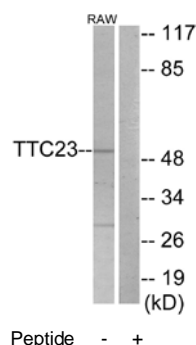
**Applications:** WB: 1:500~1:1000 ELISA: 1:40000

**References:**

Kim J.W., Submitted (AUG-2001) to the EMBL/GenBank/DDBJ databases.

Ota T., Nat. Genet. 36:40-45(2004).

The MGC Project Team, Genome Res. 14:2121-2127(2004).



Western blot analysis of extracts from RAW264.7 cells, using TTC23 antibody.

**For Research Use Only**