



MARK2 Antibody

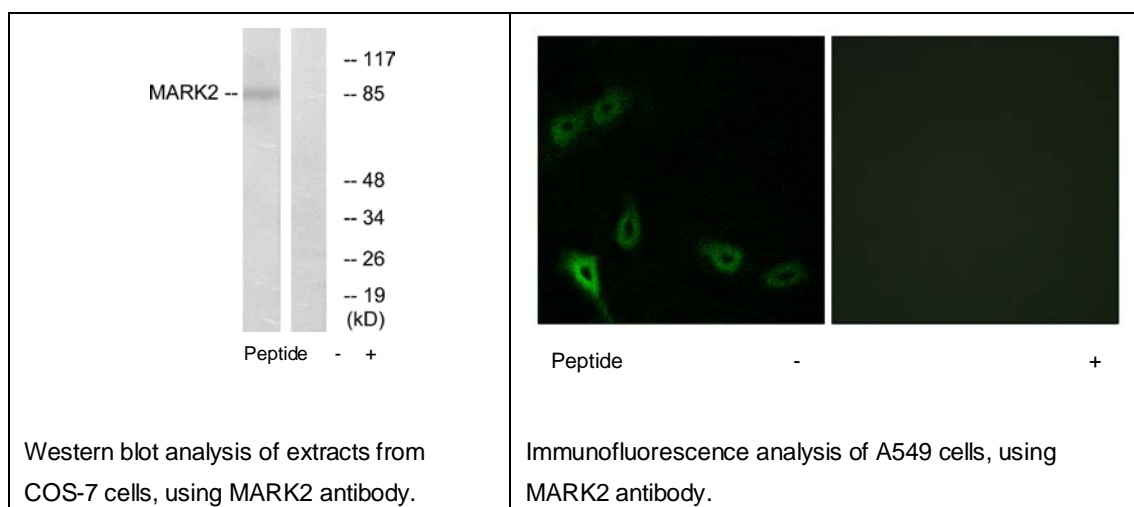
E11-11249C

Catalog Number: E11-11249 C**Concentration:** 1mg/ml**Swiss-Prot No.:** Q7KZI7**Other Names:** EC 2.7.11.1, ELKL motif kinase 1, EMK, EMK1, MAP/microtubule affinity-regulating kinase 2, PAR-1, PAR-1b, kinase MARK2**Storage/Stability:** Store at -20°C/1 year**Form of Antibody:** Rabbit IgG in phosphate buffered saline (without Mg^{2+} and Ca^{2+}), pH 7.4, 150mM NaCl, 0.02% sodium azide and 50% glycerol.**Immunogen:** The antiserum was produced against synthesized peptide derived from N-terminal of human MARK2.**Purification:** The antibody was affinity-purified from rabbit antiserum by affinity-chromatography using epitope-specific immunogen.**Specificity:** MARK2 antibody detects endogenous levels of total MARK2 protein.**Reactivity:** Human, Mouse, Rat**Applications:** WB: 1:500~1:1000 IF: 1:100~1:500
ELISA: 1:20000**References:**

Espinosa L., Cytogenet. Cell Genet. 81:278-282(1998).

Lizcano J.M., EMBO J. 23:833-843(2004).

Taylor T.D., Nature 440:497-500(2006).

**For Research Use Only**