



## ARMX2 Antibody

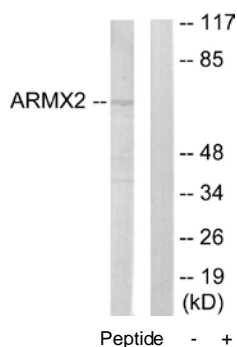
E11-11250C

**Catalog Number:** E11-11250 C**Concentration:** 1mg/ml**Swiss-Prot No.:** Q7L311**Other Names:** Armadillo repeat-containing X-linked protein 2, Protein ALEX2, ARM protein lost in epithelial cancers on chromosome X 2, ARMCX2, ALEX2, KIAA0512**Storage/Stability:** Store at -20°C/1 year**Form of Antibody:** Rabbit IgG in phosphate buffered saline (without  $Mg^{2+}$  and  $Ca^{2+}$ ), pH 7.4, 150mM NaCl, 0.02% sodium azide and 50% glycerol.**Immunogen:** The antiserum was produced against synthesized peptide derived from internal of human ARMX2.**Purification:** The antibody was affinity-purified from rabbit antiserum by affinity-chromatography using epitope-specific immunogen.**Specificity:** ARMX2 antibody detects endogenous levels of total ARMX2 protein.**Reactivity:** Human, Mouse, Rat**Applications:** WB: 1:500~1:1000 IF: 1:100~1:500  
ELISA: 1:20000**References:**

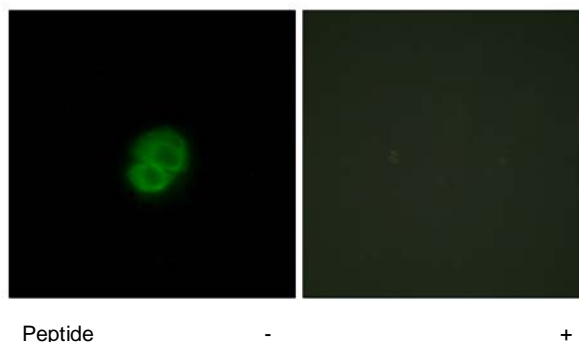
Nagase T., DNA Res. 5:31-39(1998).

Ross M.T., Nature 434:325-337(2005).

Kurochkin I.V., Biochem. Biophys. Res. Commun. 280:340-347(2001).



Western blot analysis of extracts from 293 cells, using ARMX2 antibody.



Immunofluorescence analysis of HepG2 cells, using ARMX2 antibody.

**For Research Use Only**