



## DOK3 Antibody

E11-11252C

**Catalog Number:** E11-11252 C

**Concentration:** 1mg/ml

**Swiss-Prot No.:** Q7L591

**Other Names:** Docking protein 3, Downstream of tyrosine kinase 3, DOK3

**Storage/Stability:** Store at -20°C/1 year

**Form of Antibody:** Rabbit IgG in phosphate buffered saline (without  $Mg^{2+}$  and  $Ca^{2+}$ ), pH 7.4, 150mM NaCl, 0.02% sodium azide and 50% glycerol.

**Immunogen:** The antiserum was produced against synthesized peptide derived from internal of human DOK3.

**Purification:** The antibody was affinity-purified from rabbit antiserum by affinity-chromatography using epitope-specific immunogen.

**Specificity:** DOK3 antibody detects endogenous levels of total DOK3 protein.

**Reactivity:** Human, Mouse

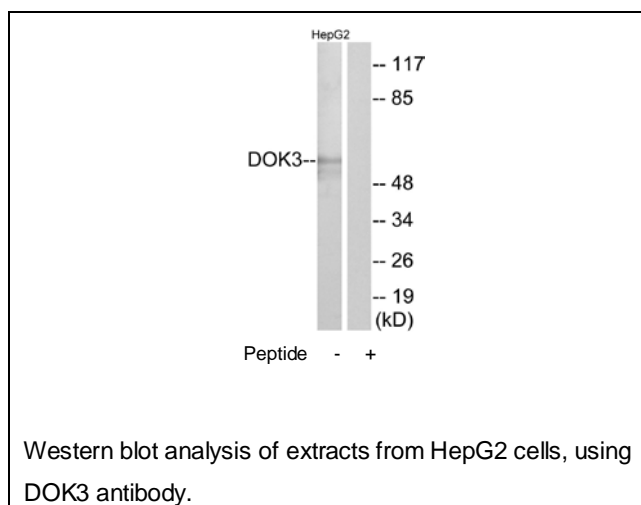
**Applications:** WB: 1:500~1:1000    ELISA: 1:20000

**References:**

Ota T., Nat. Genet. 36:40-45(2004).

The MGC Project Team, Genome Res. 14:2121-2127(2004).

Favre C., Genes Immun. 4:40-45(2003).



**For Research Use Only**