



MOL1A Antibody

E11-11256C

Catalog Number: E11-11256 C

Concentration: 1mg/ml

Swiss-Prot No.: Q7L9L4

Other Names: MATS2, MOB1, Mps One Binder kinase activator-like 1A

Storage/Stability: Store at -20°C/1 year

Form of Antibody: Rabbit IgG in phosphate buffered saline (without Mg²⁺ and Ca²⁺), pH 7.4, 150mM NaCl, 0.02% sodium azide and 50% glycerol.

Immunogen: The antiserum was produced against synthesized peptide derived from internal of human MOL1A.

Purification: The antibody was affinity-purified from

rabbit antiserum by affinity-chromatography using epitope-specific immunogen.

Specificity: MOL1A antibody detects endogenous levels of total MOL1A protein.

Reactivity: Human, Mouse

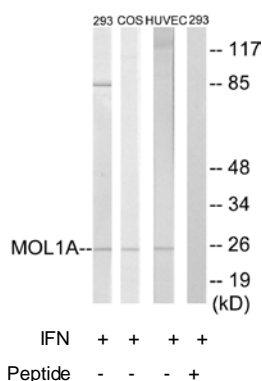
Applications: WB: 1:500~1:1000 ELISA: 1:40000

References:

Florindo C.S., Submitted (JUL-2003) to the EMBL/GenBank/DDBJ databases.

The MGC Project Team, Genome Res. 14:2121-2127(2004).

Devroe E., J. Biol. Chem. 279:24444-24451(2004).



Western blot analysis of extracts from 293 cells, COS-7 cells and HUVEC cells all treated with IFN (2500U/ml, 30mins), using MOL1A antibody.

For Research Use Only