



MAGI2 Antibody

E11-11278C

Catalog Number: E11-11278 C

Concentration: 1mg/ml

Swiss-Prot No.: Q86UL8

Other Names: Atrophin-1 interacting protein 1, Atrophin-1 interacting protein A, KIAA0705, MAGI-2, MAGI2, Membrane associated guanylate kinase inverted-2

Storage/Stability: Store at -20°C/1 year

Form of Antibody: Rabbit IgG in phosphate buffered saline (without Mg^{2+} and Ca^{2+}), pH 7.4, 150mM NaCl, 0.02% sodium azide and 50% glycerol.

Immunogen: The antiserum was produced against synthesized peptide derived from internal of human MAGI2.

Purification: The antibody was affinity-purified from rabbit antiserum by affinity-chromatography using epitope-specific immunogen.

Specificity: MAGI2 antibody detects endogenous levels of total MAGI2 protein.

Reactivity: Human, Mouse, Rat

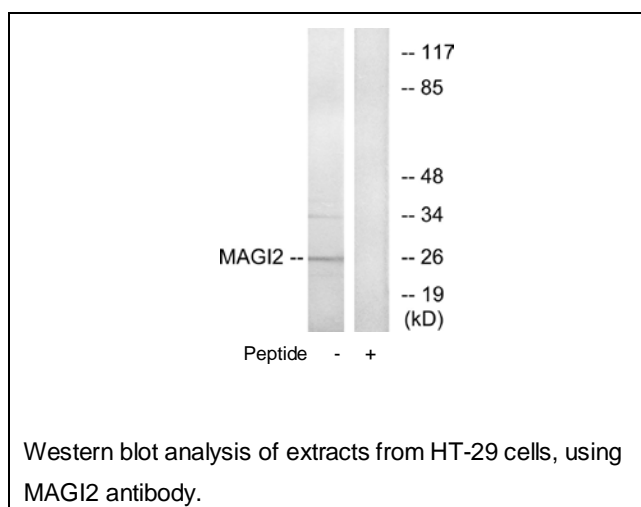
Applications: WB: 1:500~1:1000 ELISA: 1:20000

References:

Florindo C.S., Submitted (JUL-2003) to the EMBL/GenBank/DDBJ databases.

The MGC Project Team, Genome Res. 14:2121-2127(2004).

Devroe E., J. Biol. Chem. 279:24444-24451(2004).



For Research Use Only