



DGKH Antibody

E11-11290C

Catalog Number: E11-11290 C

Concentration: 1mg/ml

Swiss-Prot No.: Q86XP1

Other Names: Diacylglycerol kinase eta, EC 2.7.1.107, Diglyceride kinase eta, DGK-eta, DAG kinase eta, DGKH

Storage/Stability: Store at -20°C/1 year

Form of Antibody: Rabbit IgG in phosphate buffered saline (without Mg^{2+} and Ca^{2+}), pH 7.4, 150mM NaCl, 0.02% sodium azide and 50% glycerol.

Immunogen: The antiserum was produced against synthesized peptide derived from internal of human DGKH.

Purification: The antibody was affinity-purified from

rabbit antiserum by affinity-chromatography using epitope-specific immunogen.

Specificity: DGKH antibody detects endogenous levels of total DGKH protein.

Reactivity: Human (Identities = 100%, Positives = 100%);
Mouse (Identities = 100%, Positives = 100%)

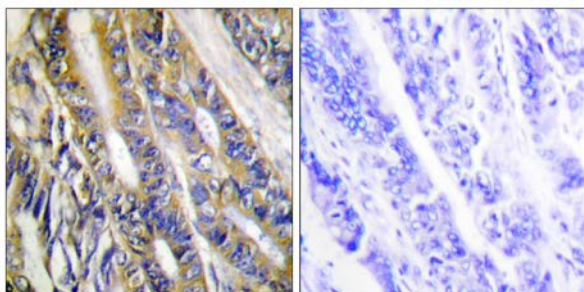
Applications: IHC: 1:50~1:100 IF: 1:100~1:500
ELISA: 1:5000

References:

Murakami T., J. Biol. Chem. 278:34364-34372(2003).

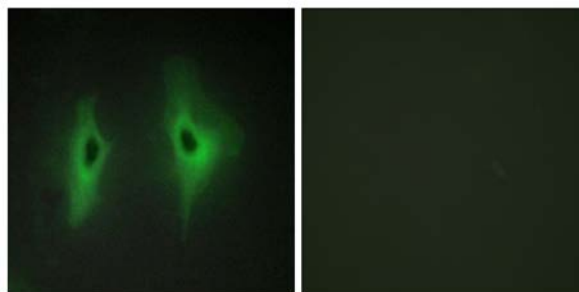
Dunham A., Nature 428:522-528(2004).

Ota T., Nat. Genet. 36:40-45(2004).



Peptide - +

Immunohistochemistry analysis of paraffin-embedded human colon carcinoma tissue, using DGKH antibody.



Peptide - +

Immunofluorescence analysis of HeLa cells, using DGKH antibody.

For Research Use Only