



MAP4K3 Antibody

E11-11306C

Catalog Number: E11-11306 C

Concentration: 1mg/ml

Swiss-Prot No.: Q8IVH8

Other Names: EC 2.7.11.1; Germinal center kinase related protein kinase; GLK; kinase KHS2; M4K3; MAP4K3; MAPK/ERK kinase kinase kinase 3; MEK kinase kinase 3; MEKKK 3

Storage/Stability: Store at -20°C/1 year

Form of Antibody: Rabbit IgG in phosphate buffered saline (without Mg^{2+} and Ca^{2+}), pH 7.4, 150mM NaCl, 0.02% sodium azide and 50% glycerol.

Immunogen: The antiserum was produced against synthesized peptide derived from N-terminal of human MAP4K3.

Purification: The antibody was affinity-purified from rabbit antiserum by affinity-chromatography using epitope-specific immunogen.

Specificity: MAP4K3 antibody detects endogenous levels of total MAP4K3 protein.

Reactivity: Human, Mouse, Rat

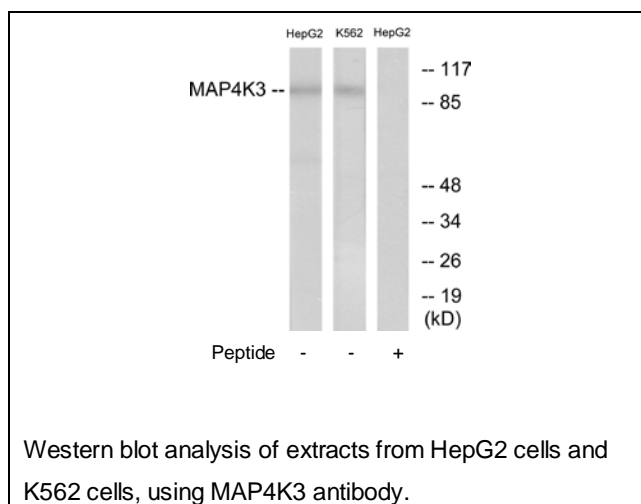
Applications: WB: 1:500~1:1000 ELISA: 1:20000

References:

Diener K., Proc. Natl. Acad. Sci. U.S.A. 94:9687-9692(1997).

Gorry M.C., Submitted (NOV-2001) to the EMBL/GenBank/DDBJ databases.

Edwards J., Submitted (JUN-1999) to the EMBL/GenBank/DDBJ databases.



For Research Use Only