



CCRK Antibody

E11-11329C

Catalog Number: E11-11329 C

Concentration: 1mg/ml

Swiss-Prot No.: Q8IZL9

Other Names: Cell cycle-related kinase, EC 2.7.11.22, Cyclin-kinase-activating kinase p42, CDK-activating kinase p42, CAK-kinase p42, Cyclin-dependent protein kinase H, CCRK, CDCH

Storage/Stability: Store at -20°C/1 year

Form of Antibody: Rabbit IgG in phosphate buffered saline (without Mg^{2+} and Ca^{2+}), pH 7.4, 150mM NaCl, 0.02% sodium azide and 50% glycerol.

Immunogen: The antiserum was produced against synthesized peptide derived from internal of human CCRK.

Purification: The antibody was affinity-purified from rabbit antiserum by affinity-chromatography using epitope-specific immunogen.

Specificity: CCRK antibody detects endogenous levels of total CCRK protein.

Reactivity: Human, Mouse, Rat

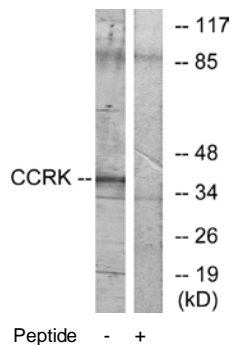
Applications: WB: 1:500~1:1000 IF: 1:100~1:500
ELISA: 1:1000

References:

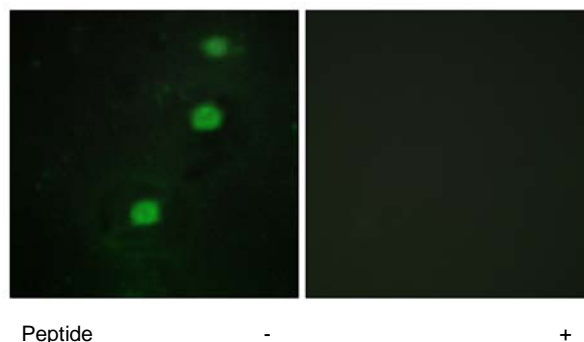
Humphray S.J., Nature 429:369-374(2004).

The MGC Project Team, Genome Res. 14:2121-2127(2004).

Liu Y., J. Biol. Chem. 279:4507-4514(2004).



Western blot analysis of extracts from RAW264.7 cells, using CCRK antibody.



Immunofluorescence analysis of HUVEC cells, using CCRK antibody.

For Research Use Only