



## AurA (Phospho-Ser342) Antibody

E11-1132A

**Catalog Number:** E11-1132A

**Concentration:** 1mg/ml

**Swiss-Prot No.:** O14965

**Other Names:** AIK, ARK1, AYK1, Aurora-A, Aurora-family kinase 1, Aurora-related kinase 1, Aurora/IPL1-related kinase 1, BTAK, Breast-tumor-amplified kinase, EC 2.7.11.1, IAK1, Ipl1- and aurora-related kinase 1, STK15, STK6, Serine/threonine kinase 15, Serine/threonine kinase 6, Serine/threonine kinase Ayk1, kinase AurA

**All Sites:** Human: Ser342; Mouse: Ser333; Rat: Ser335

**Storage/Stability:** Store at -20 °C/1 year

**Form of Antibody:** Rabbit IgG in phosphate buffered saline (without  $Mg^{2+}$  and  $Ca^{2+}$ ), pH 7.4, 150mM NaCl, 0.02% sodium azide and 50% glycerol.

**Immunogen:** The antiserum was produced against synthesized phosphopeptide derived from human AurA around the phosphorylation site of serine 342 (R-I-S<sup>P</sup>-R-V).

**Purification:** The antibody was affinity-purified from

rabbit antiserum by affinity-chromatography using epitope-specific phosphopeptide. The antibody against non-phosphopeptide was removed by chromatography using non-phosphopeptide corresponding to the phosphorylation site.

**Specificity:** AurA (Phospho-Ser342) antibody detects endogenous levels of AurA only when phosphorylated at serine 342.

**Reactivity:** Human (Identities = 100%, Positives = 100%);

Mouse (Identities = 90%, Positives = 90%);

Rat (Identities = 90%, Positives = 90%)

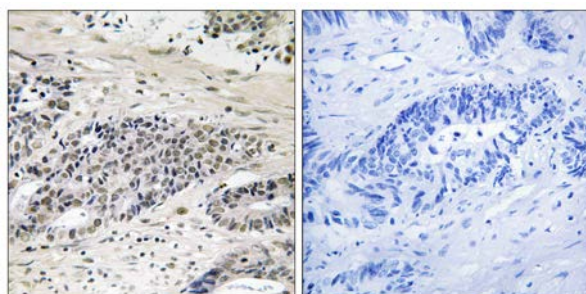
**Applications:** IHC: 1:50~1:100 ELISA: 1:1000

### References:

Elizabeth A. Rowley. Journal of Refugee Studies, Jun 2006; 19: 158 - 186.

GERVASE CLARENCE-SMITH. Afr. Aff. (Lond), Apr 1986; 85: 310 - 311.

Michael Bratton. Afr. Aff. (Lond), Jul 2001; 100: 429 - 452.

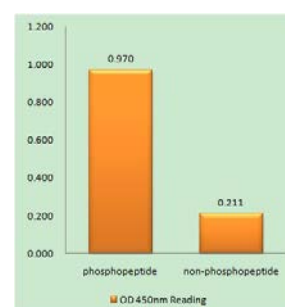


P-peptide

-

+

Immunohistochemistry analysis of paraffin-embedded human colon carcinoma tissue using AurA (Phospho-Ser342) antibody.



AurA (Phospho-Ser342) antibody reacts with epitope-specific phosphopeptide and corresponding non-phosphopeptide. The absorbance readings at 450 nM are shown in the ELISA figure.

**For Research Use Only**