



AurB/C (Phospho-Thr236/202) Antibody

E11-1137A

Catalog Number: E11-1137A

Concentration: 1mg/ml

Swiss-Prot No.: Q9UQB9

Other Names: AIE1, AIE2, AURKC, Aurora-C, Aurora/Ipl1-related kinase 3, Aurora/Ipl1/Eg2 protein 1, Aurora/Ipl1/Eg2 protein 2, EC 2.7.11.1, STK13, STKD, Serine/threonine protein kinase 13, kinase AIK3

All Sites: Human: Thr236/202; Mouse: Thr241/175; Rat: Thr239/175

Storage/Stability: Store at -20 °C/1 year

Form of Antibody: Rabbit IgG in phosphate buffered saline (without Mg^{2+} and Ca^{2+}), pH 7.4, 150mM NaCl, 0.02% sodium azide and 50% glycerol.

Immunogen: The antiserum was produced against synthesized phosphopeptide derived from human AurB/C around the phosphorylation site of threonine 236/202 (C-G-T^P-L-D).

Purification: The antibody was affinity-purified from rabbit antiserum by affinity-chromatography using

epitope-specific phosphopeptide. The antibody against non-phosphopeptide was removed by chromatography using non-phosphopeptide corresponding to the phosphorylation site.

Specificity: AurB/C (Phospho-Thr236/202) antibody detects endogenous levels of AurB/C only when phosphorylated at threonine 236/202.

Reactivity: Human (Identities = 100%, Positives = 100%);
Mouse (Identities = 100%, Positives = 100%);
Rat (Identities = 100%, Positives = 100%)

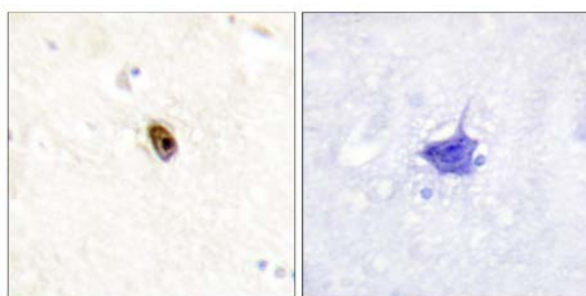
Applications: IHC: 1:50~1:100 ELISA: 1:10000

References:

Steven L. Warner. Mol. Cancer Ther., Oct 2006; 5: 2450 - 2458.

Adrianne E. Hontz. AACR Meeting Abstracts, Apr 2005; 2005: 492.

Adrianne E. Hontz. AACR Meeting Abstracts, Apr 2006; 2006: 1326.

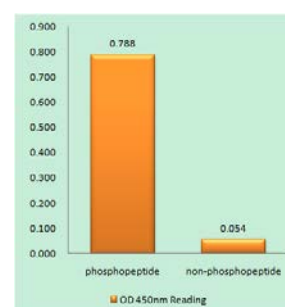


P-peptide

-

+

Immunohistochemistry analysis of paraffin-embedded human brain tissue using AurB/C (Phospho-Thr236/202) antibody.



AurB/C (Phospho-Thr236/202) antibody reacts with epitope-specific phosphopeptide and corresponding non-phosphopeptide. The absorbance readings at 450 nM are shown in the ELISA figure.

For Research Use Only