



## ES8L1 Antibody

E11-11395C

**Catalog Number:** E11-11395 C

**Concentration:** 1mg/ml

**Swiss-Prot No.:** Q8TE68

**Other Names:** Epidermal growth factor receptor kinase substrate 8-like protein 1, Epidermal growth factor receptor pathway substrate 8-related protein 1, EPS8-like protein 1, EPS8L1, DRC3, EPS8R1, PP10566

**Storage/Stability:** Store at -20°C/1 year

**Form of Antibody:** Rabbit IgG in phosphate buffered saline (without  $Mg^{2+}$  and  $Ca^{2+}$ ), pH 7.4, 150mM NaCl, 0.02% sodium azide and 50% glycerol.

**Immunogen:** The antiserum was produced against synthesized peptide derived from internal of human ES8L1.

**Purification:** The antibody was affinity-purified from rabbit antiserum by affinity-chromatography using epitope-specific immunogen.

**Specificity:** ES8L1 antibody detects endogenous levels of total ES8L1 protein.

**Reactivity:** Human, Mouse

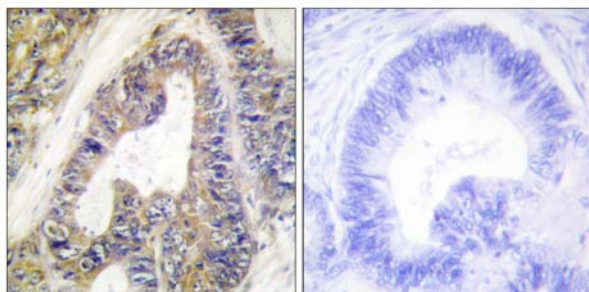
**Applications:** WB: 1:500~1:1000 IHC: 1:50~1:100  
ELISA: 1:20000

**References:**

Wu K., Zhonghua Yi Xue Yi Chuan Xue Za Zhi 16:325-327(1999).

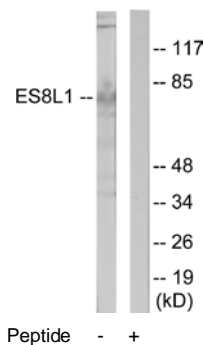
Tocchetti A., Genomics 81:234-244(2003).

Wan D., Proc. Natl. Acad. Sci. U.S.A. 101:15724-15729(2004).



Peptide - +

Immunohistochemistry analysis of paraffin-embedded human colon carcinoma tissue using ES8L1 antibody.



Peptide - +

Western blot analysis of extracts from COLO205 cells, using ES8L1 antibody.

**For Research Use Only**