



## ORAV1 Antibody

E11-11406C

**Catalog Number:** E11-11406 C

**Concentration:** 1mg/ml

**Swiss-Prot No.:** Q8WV07

**Other Names:** Oral cancer overexpressed protein 1, Tumor amplified and overexpressed sequence 1, ORAOV1, TAOS1

**Storage/Stability:** Store at -20°C/1 year

**Form of Antibody:** Rabbit IgG in phosphate buffered saline (without Mg<sup>2+</sup> and Ca<sup>2+</sup>), pH 7.4, 150mM NaCl, 0.02% sodium azide and 50% glycerol.

**Immunogen:** The antiserum was produced against synthesized peptide derived from internal of human ORAV1.

**Purification:** The antibody was affinity-purified from rabbit antiserum by affinity-chromatography using epitope-specific immunogen.

**Specificity:** ORAV1 antibody detects endogenous levels of total ORAV1 protein.

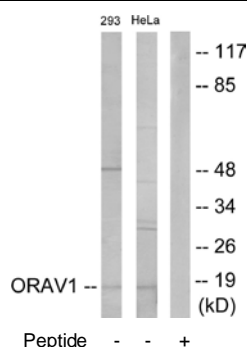
**Reactivity:** Human

**Applications:** WB: 1:500~1:1000 ELISA: 1:10000

**References:**

Huang X., Proc. Natl. Acad. Sci. U.S.A. 99:11369-11374(2002).

The MGC Project Team, Genome Res. 14:2121-2127(2004).



Western blot analysis of extracts from 293 cells and HeLa cells, using ORAV1 antibody.

**For Research Use Only**