



Catenin- α 1 (Phospho-Ser641) Antibody

E11-1140A

Catalog Number: E11-1140A

Concentration: 1mg/ml

Swiss-Prot No.: P35221

Other Names: 102 kDa cadherin-associated protein; Alpha E-catenin; CATNA1; CTN1; Cadherin-associated protein; catenin, alpha-1

All Sites: Human: Ser641; Mouse: Ser641; Rat: Ser643

Storage/Stability: Store at -20°C/1 year

Form of Antibody: Rabbit IgG in phosphate buffered saline (without Mg^{2+} and Ca^{2+}), pH 7.4, 150mM NaCl, 0.02% sodium azide and 50% glycerol.

Immunogen: The antiserum was produced against synthesized phosphopeptide derived from human Catenin- α 1 around the phosphorylation site of serine 641 (D-D-S^P-D-F).

Purification: The antibody was affinity-purified from rabbit antiserum by affinity-chromatography using epitope-specific phosphopeptide. The antibody against non-phosphopeptide was removed by chromatography using non-phosphopeptide corresponding to the phosphorylation site.

Specificity: Catenin- α 1 (Phospho-Ser641) antibody detects endogenous levels of Catenin- α 1 only when phosphorylated at serine 641.

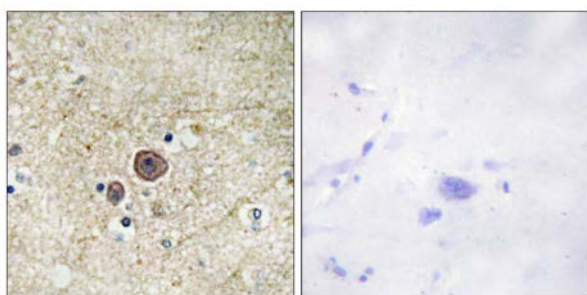
Reactivity: Human, Mouse, Rat

Applications: IHC: 1:50~1:100 ELISA: 1:1000

References:

Furukawa Y., Cytogenet. Cell Genet. 65:74-78(1994).

Oda T., Biochem. Biophys. Res. Commun. 193:897-904(1993).



P-peptide

-

+

Immunohistochemistry analysis of paraffin-embedded human brain tissue, using Catenin- α 1 (Phospho-Ser641) antibody.

For Research Use Only