



## Catenin- $\alpha$ 1 Antibody

E11-1140B

**Catalog Number:** E11-1140B**Concentration:** 1mg/ml**Swiss-Prot No.:** P35221**Other Names:** 102 kDa cadherin-associated protein, Alpha E-catenin, CATNA1, CTN1, Cadherin-associated protein, catenin, alpha-1**Storage/Stability:** Store at -20°C/1 year**Form of Antibody:** Rabbit IgG in phosphate buffered saline (without Mg<sup>2+</sup> and Ca<sup>2+</sup>), pH 7.4, 150mM NaCl, 0.02% sodium azide and 50% glycerol.**Immunogen:** The antiserum was produced against synthesized peptide derived from Internal of human Catenin- $\alpha$ 1.**Purification:** The antibody was affinity-purified from rabbit antiserum by affinity-chromatography using

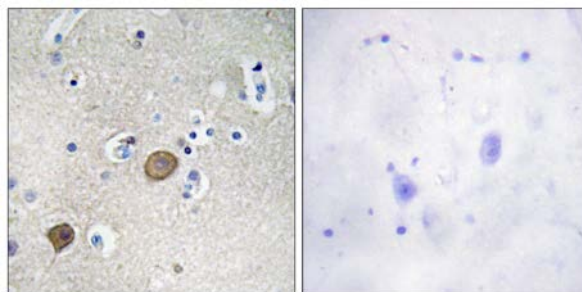
epitope-specific immunogen.

**Specificity:** Catenin- $\alpha$ 1 antibody detects endogenous levels of total Catenin- $\alpha$ 1 protein.**Reactivity:** Human (Identities = 100%, Positives = 100%);  
Mouse (Identities = 100%, Positives = 100%);  
Rat (Identities = 100%, Positives = 100%)**Applications:** IHC: 1:50~1:100 ELISA: 1:5000**References:**

Yutaka Shimoyama. Cancer Res., Oct 1992; 52: 5770 - 5774.

Griet Vanpoucke. Nucleic Acids Res., Aug 2004; 32: 4155 - 4165.

Jolanda van Hengel. J. Cell Biol., Jun 1997; 137: 1103.



Peptide

-

+

Immunohistochemistry analysis of paraffin-embedded human brain tissue using Catenin- $\alpha$ 1 antibody.

**For Research Use Only**