



MADD Antibody

E11-11414C

Catalog Number: E11-11414 C**Concentration:** 1mg/ml**Swiss-Prot No.:** Q8WXG6**Other Names:** MAP kinase-activating death domain protein; Differentially expressed in normal and neoplastic cells; Insulinoma glucagonoma clone 20; Rab3 GDP/GTP exchange factor; MADD; DENN, IG20, KIAA0358**Storage/Stability:** Store at -20°C/1 year**Form of Antibody:** Rabbit IgG in phosphate buffered saline (without Mg^{2+} and Ca^{2+}), pH 7.4, 150mM NaCl, 0.02% sodium azide and 50% glycerol.**Immunogen:** The antiserum was produced against synthesized peptide derived from internal of human

MADD.

Purification: The antibody was affinity-purified from rabbit antiserum by affinity-chromatography using epitope-specific immunogen.**Specificity:** MADD antibody detects endogenous levels of total MADD protein.**Reactivity:** Human, Mouse, Rat**Applications:** WB: 1:500~1:1000 IHC: 1:50~1:100

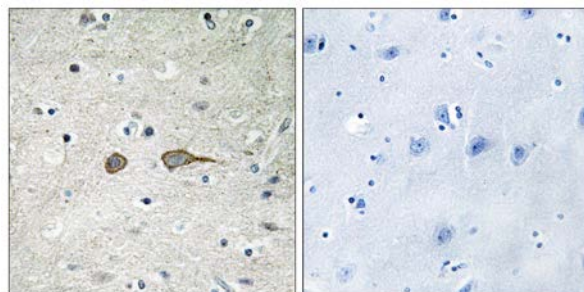
IF: 1:100~1:500 ELISA: 1:1000

References:

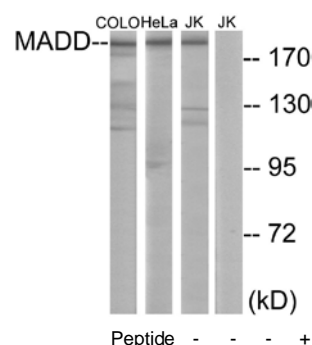
Chow V.T.K., DNA Seq. 6:263-273(1996).

Schievella A.R., J. Biol. Chem. 272:12069-12075(1997).

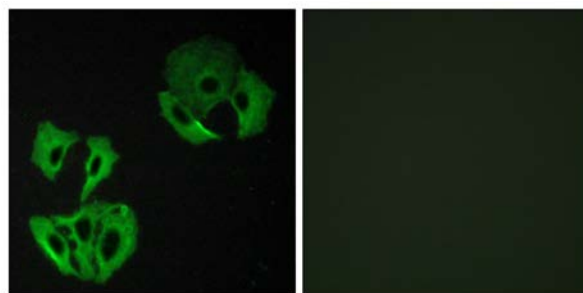
Chow V.T.K., Genome 41:543-552(1998).



Immunohistochemistry analysis of paraffin-embedded human brain tissue using MADD antibody.



Western blot analysis of extracts from COLO cells, HeLa cells and Jurkat cells, using MADD antibody.

**For Research Use Only**

Peptide	-	+
Immunofluorescence analysis of A549 cells, using MADD antibody.		