



CDKL2 Antibody

E11-11433C

Catalog Number: E11-11433 C

Concentration: 1mg/ml

Swiss-Prot No.: Q92772

Other Names: Cyclin-dependent kinase-like 2, EC 2.7.11.22, Serine/threonine-protein kinase KKIAMRE, Protein kinase p56 KKIAMRE, CDKL2

Storage/Stability: Store at -20°C/1 year

Form of Antibody: Rabbit IgG in phosphate buffered saline (without Mg^{2+} and Ca^{2+}), pH 7.4, 150mM NaCl, 0.02% sodium azide and 50% glycerol.

Immunogen: The antiserum was produced against synthesized peptide derived from internal of human

CDKL2.

Purification: The antibody was affinity-purified from rabbit antiserum by affinity-chromatography using epitope-specific immunogen.

Specificity: CDKL2 antibody detects endogenous levels of total CDKL2 protein.

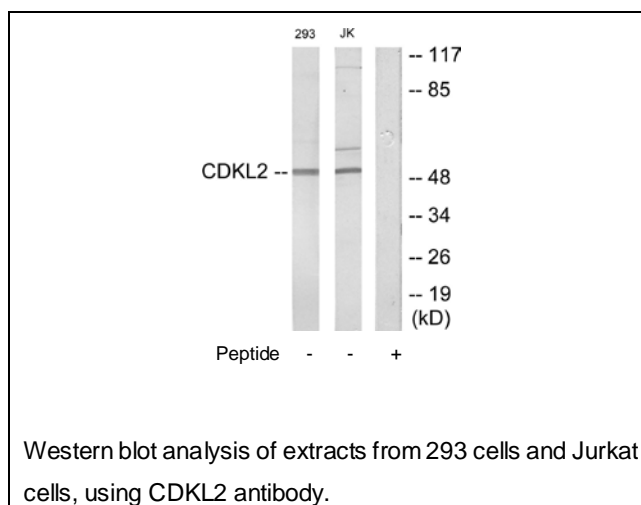
Reactivity: Human

Applications: WB: 1:500~1:1000 ELISA: 1:10000

References:

Taglienti C.A., Oncogene 13:2563-2574(1996).

The MGC Project Team, Genome Res. 14:2121-2127(2004).



For Research Use Only