



EZH1 Antibody

E11-11435C

Catalog Number: E11-11435 C**Concentration:** 1mg/ml**Swiss-Prot No.:** Q92800**Other Names:** ENX-1, Enhancer of zeste homolog 2**Storage/Stability:** Store at -20°C/1 year**Form of Antibody:** Rabbit IgG in phosphate buffered saline (without Mg^{2+} and Ca^{2+}), pH 7.4, 150mM NaCl, 0.02% sodium azide and 50% glycerol.**Immunogen:** The antiserum was produced against synthesized peptide derived from internal of human EZH1.**Purification:** The antibody was affinity-purified from

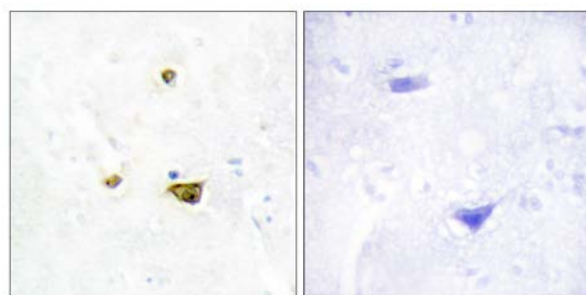
rabbit antiserum by affinity-chromatography using epitope-specific immunogen.

Specificity: EZH1 antibody detects endogenous levels of total EZH1 protein.**Reactivity:** Human, Mouse**Applications:** WB: 1:500~1:1000 IHC: 1:50~1:100
ELISA: 1:5000**References:**

Abel K.J., Genomics 37:161-171(1996).

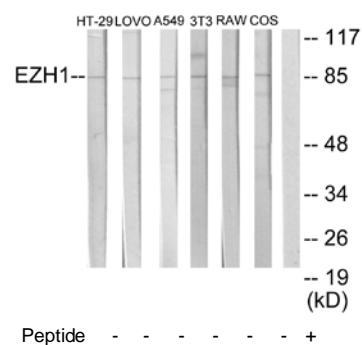
Ogawa M., Biochim. Biophys. Acta 1395:151-158(1998).

Nagase T., DNA Res. 4:141-150(1997).



Peptide - +

Immunohistochemistry analysis of paraffin-embedded human brain tissue using EZH1 antibody.



Western blot analysis of extracts from HT-29 cells, LOVO cells, A549 cells, NIH-3T3 cells, RAW264.7 cells and COS-7 cells, using EZH1 antibody.