



## ORCTL-2 Antibody

E11-11478C

**Catalog Number:** E11-11478 C

**Concentration:** 1mg/ml

**Swiss-Prot No.:** Q96BI1

**Other Names:** Solute carrier family 22 member 18, Organic cation transporter-like protein 2, ORCTL-2, Imprinted multi-membrane spanning polyspecific transporter-related protein 1, Efflux transporter-like protein, Tumor-suppressing subchromosomal transferable fragment candidate gene 5 protein, Tumor-suppressing STF cDNA 5 protein, Beckwith-Wiedemann syndrome chromosomal region 1 candidate gene A protein, p45-Beckwith-Wiedemann region 1 A, p45-BWR1A, Solute carrier family 22 member 1-like, SLC22A18, BWR1A, BWSCR1A, HET, IMPT1, ITM, ORCTL2, SLC22A1L, TSSC5v

**Storage/Stability:** Store at -20°C/1 year

**Form of Antibody:** Rabbit IgG in phosphate buffered

saline (without  $Mg^{2+}$  and  $Ca^{2+}$ ), pH 7.4, 150mM NaCl, 0.02% sodium azide and 50% glycerol.

**Immunogen:** The antiserum was produced against synthesized peptide derived from C-terminal of human ORCTL-2.

**Purification:** The antibody was affinity-purified from rabbit antiserum by affinity-chromatography using epitope-specific immunogen.

**Specificity:** ORCTL-2 antibody detects endogenous levels of total ORCTL-2 protein.

**Reactivity:** Human

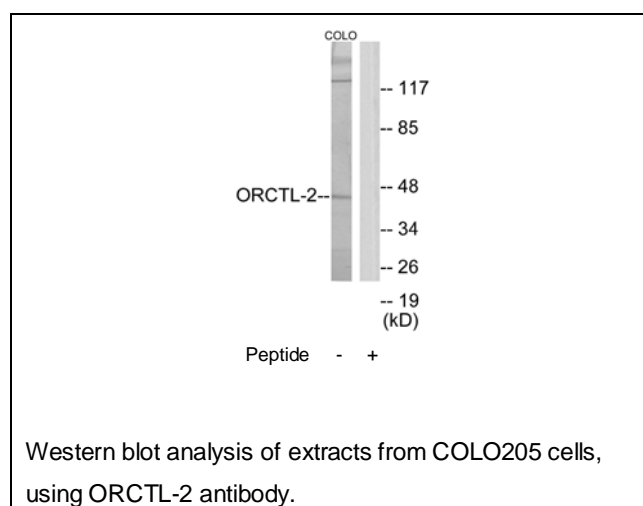
**Applications:** WB: 1:500~1:1000 ELISA: 1:5000

**References:**

Lee M.P., Cancer Res. 58:4155-4159(1998).

Morisaki H., DNA Res. 5:235-240(1998).

Cooper P.R., Genomics 49:38-51(1998).



**For Research Use Only**