



SPZ1 Antibody

E11-11631C

Catalog Number: E11-11631 C

Concentration: 1mg/ml

Swiss-Prot No.: Q9BXG8

Other Names: Spermatogenic leucine zipper protein 1, Testis-specific protein 1, Testis-specific protein NYD-TSP1, SPZ1, TSP1

Storage/Stability: Store at -20°C/1 year

Form of Antibody: Rabbit IgG in phosphate buffered saline (without Mg^{2+} and Ca^{2+}), pH 7.4, 150mM NaCl, 0.02% sodium azide and 50% glycerol.

Immunogen: The antiserum was produced against synthesized peptide derived from internal of human SPZ1.

Purification: The antibody was affinity-purified from

rabbit antiserum by affinity-chromatography using epitope-specific immunogen.

Specificity: SPZ1 antibody detects endogenous levels of total SPZ1 protein.

Reactivity: Human (Identities = 100%, Positives = 100%);

Mouse (Identities = 100%, Positives = 100%);

Rat (Identities = 100%, Positives = 100%)

Applications: IHC: 1:50~1:100 IF: 1:100~1:500

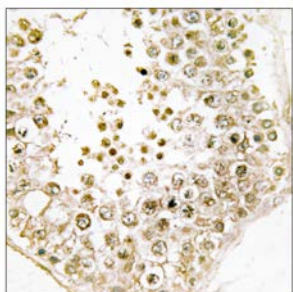
ELISA: 1:20000

References:

Sha J.-H., Asian J. Androl. 5:83-88(2003).

Ota T., Nat. Genet. 36:40-45(2004).

Schmutz J., Nature 431:268-274(2004).

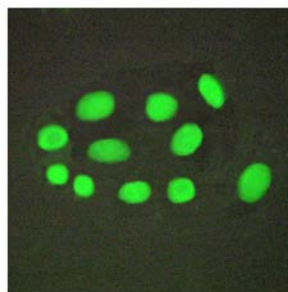
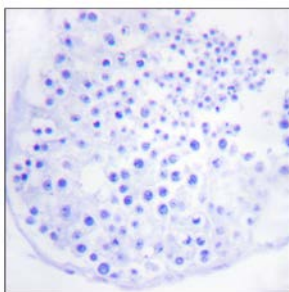


Peptide

-

+

Immunohistochemistry analysis of paraffin-embedded human testis tissue, using SPZ1 antibody.



Peptide

-

+

Immunofluorescence analysis of A549 cells, using SPZ1 antibody.

For Research Use Only