



NPM Antibody

E11-11642C

Catalog Number: E11-11642 C

Concentration: 1mg/ml

Swiss-Prot No.: Q9BYG9

Other Names: Nucleophosmin/B23.2, Nucleophosmin, Nucleolar phosphoprotein B23, numatrin, NPM1

Storage/Stability: Store at -20°C/1 year

Form of Antibody: Rabbit IgG in phosphate buffered saline (without Mg^{2+} and Ca^{2+}), pH 7.4, 150mM NaCl, 0.02% sodium azide and 50% glycerol.

Immunogen: The antiserum was produced against synthesized peptide derived from N-terminal of human NPM.

Purification: The antibody was affinity-purified from

rabbit antiserum by affinity-chromatography using epitope-specific immunogen.

Specificity: NPM antibody detects endogenous levels of total NPM protein.

Reactivity: Human, Mouse, Rat

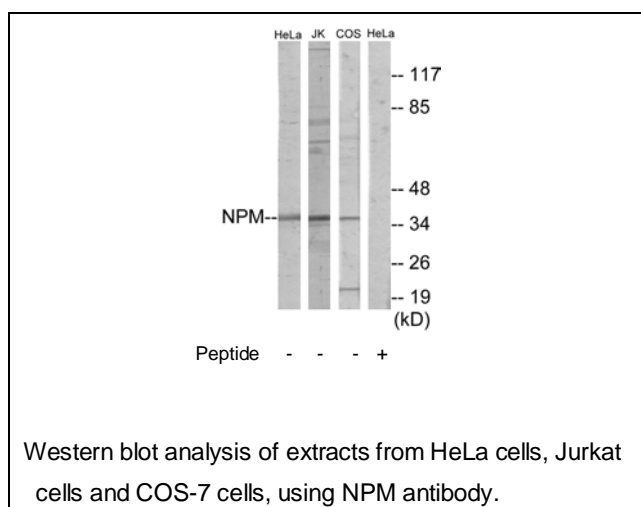
Applications: WB: 1:500~1:1000 ELISA: 1:1000

References:

Okuwaki M., Submitted (APR-2000) to the EMBL/GenBank/DDBJ databases.

Strausberg R.L., Proc. Natl. Acad. Sci. U.S.A. 99:16899-16903(2002).

NIH MGC Project, Submitted (OCT-2005) to the EMBL/GenBank/DDBJ databases.



For Research Use Only