



## YTHDF1 Antibody

E11-11643C

**Catalog Number:** E11-11643 C

**Concentration:** 1mg/ml

**Swiss-Prot No.:** Q9BYJ9

**Other Names:** YTH domain family protein 1,  
Dermatomyositis associated with cancer putative  
autoantigen 1, DACA-1, YTHDF1, C20orf21

**Storage/Stability:** Store at -20°C/1 year

**Form of Antibody:** Rabbit IgG in phosphate buffered  
saline (without  $Mg^{2+}$  and  $Ca^{2+}$ ), pH 7.4, 150mM NaCl,  
0.02% sodium azide and 50% glycerol.

**Immunogen:** The antiserum was produced against  
synthesized peptide derived from N-terminal of human  
YTHDF1.

**Purification:** The antibody was affinity-purified from  
rabbit antiserum by affinity-chromatography using  
epitope-specific immunogen.

**Specificity:** YTHDF1 antibody detects endogenous levels  
of total YTHDF1 protein.

**Reactivity:** Human, Mouse, Rat

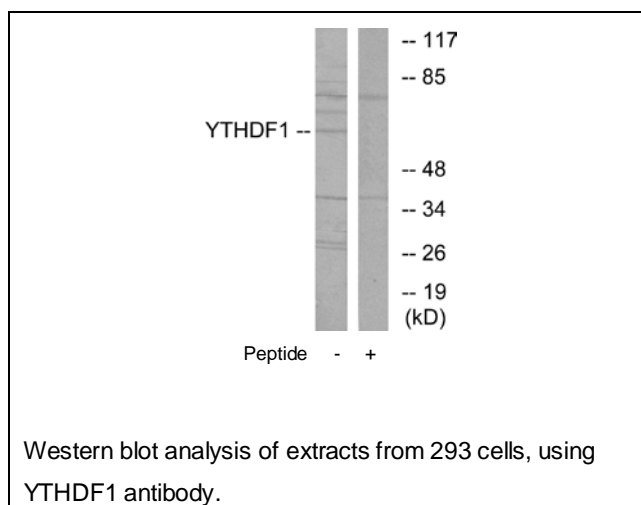
**Applications:** WB: 1:500~1:1000    ELISA: 1:1000

**References:**

Ota T., Nat. Genet. 36:40-45(2004).

Deloukas P., Nature 414:865-871(2001).

The MGC Project Team, Genome Res.  
14:2121-2127(2004).



**For Research Use Only**