



## PCDH-Y Antibody

E11-11648C

**Catalog Number:** E11-11648 C

**Concentration:** 1mg/ml

**Swiss-Prot No.:** Q9BZA8/Q9BZA7

**Other Names:** Protocadherin-11; Protocadherin-22;  
Protocadherin on the Y chromosome; PCDH-Y;  
Protocadherin prostate cancer; Protocadherin-PC

**Storage/Stability:** Store at -20°C/1 year

**Form of Antibody:** Rabbit IgG in phosphate buffered saline (without  $Mg^{2+}$  and  $Ca^{2+}$ ), pH 7.4, 150mM NaCl, 0.02% sodium azide and 50% glycerol.

**Immunogen:** The antiserum was produced against synthesized peptide derived from internal of human PCDH-Y.

**Purification:** The antibody was affinity-purified from rabbit antiserum by affinity-chromatography using epitope-specific immunogen.

**Specificity:** PCDH-Y antibody detects endogenous levels of total PCDH-Y protein.

**Reactivity:** Human (Identities = 100%, Positives = 100%)

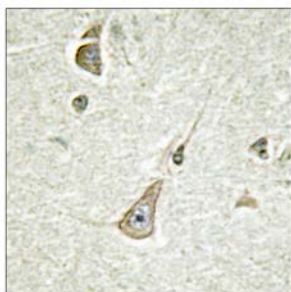
**Applications:** IHC: 1:50~1:100 IF: 1:100~1:500  
ELISA: 1:20000

**References:**

Blanco P., Mamm. Genome 11:906-914(2000).

Chen M.-W., Oncogene 21:7861-7871(2002).

Skaletsky H., Nature 423:825-837(2003).

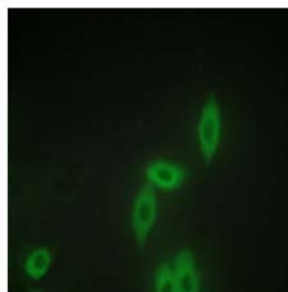
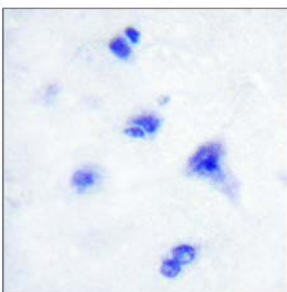


Peptide

-

+

Immunohistochemistry analysis of paraffin-embedded human brain tissue, using PCDH-Y antibody.



Peptide

-

+

Immunofluorescence analysis of HepG2 cells, using PCDH-Y antibody.

**For Research Use Only**