



ILKAP Antibody

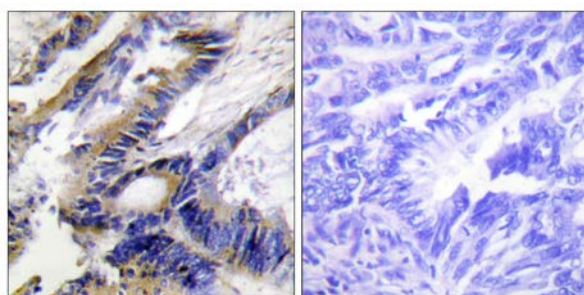
E11-11670C

Catalog Number: E11-11670 C**Concentration:** 1mg/ml**Swiss-Prot No.:** Q9H0C8**Other Names:** EC 3.1.3.16, ILKAP, Integrin-linked kinase-associated serine/threonine phosphatase 2C**Storage/Stability:** Store at -20°C/1 year**Form of Antibody:** Rabbit IgG in phosphate buffered saline (without Mg^{2+} and Ca^{2+}), pH 7.4, 150mM NaCl, 0.02% sodium azide and 50% glycerol.**Immunogen:** The antiserum was produced against synthesized peptide derived from internal of human ILKAP.**Purification:** The antibody was affinity-purified from rabbit antiserum by affinity-chromatography using epitope-specific immunogen.**Specificity:** ILKAP antibody detects endogenous levels of total ILKAP protein.**Reactivity:** Human, Mouse, Rat**Applications:** WB: 1:500~1:1000 IHC: 1:50~1:100
ELISA: 1:20000**References:**

Leung-Hagesteijn C., EMBO J. 20:2160-2170(2001).

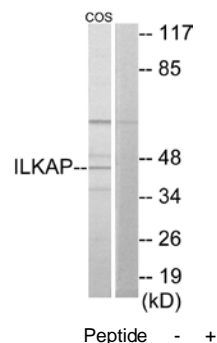
Wiemann S., Genome Res. 11:422-435(2001).

Hillier L.W., Nature 434:724-731(2005).



Peptide - +

Immunohistochemistry analysis of paraffin-embedded human colon carcinoma tissue using ILKAP antibody.



Western blot analysis of extracts from COS-7 cells, using ILKAP antibody.

For Research Use Only