



CDCP1 Antibody

E11-11696C

Catalog Number: E11-11696 C

Concentration: 1mg/ml

Swiss-Prot No.: Q9H5V8

Other Names: CUB domain-containing protein 1 [Precursor], Transmembrane and associated with src kinases, Membrane glycoprotein gp140, Subtractive immunization M plus HEP3-associated 135 kDa protein, SIMA135, CD318 antigen, CDCP1, TRASK, UNQ2486/PRO5773

Storage/Stability: Store at -20°C/1 year

Form of Antibody: Rabbit IgG in phosphate buffered saline (without Mg^{2+} and Ca^{2+}), pH 7.4, 150mM NaCl, 0.02% sodium azide and 50% glycerol.

Immunogen: The antiserum was produced against

synthesized peptide derived from internal of human CDCP1.

Purification: The antibody was affinity-purified from rabbit antiserum by affinity-chromatography using epitope-specific immunogen.

Specificity: CDCP1 antibody detects endogenous levels of total CDCP1 protein.

Reactivity: Human, Mouse

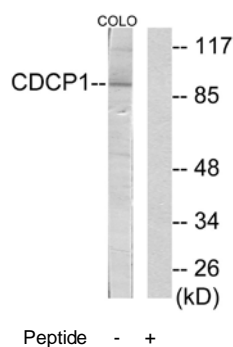
Applications: WB: 1:500~1:1000 IF: 1:100~1:500
ELISA: 1:20000

References:

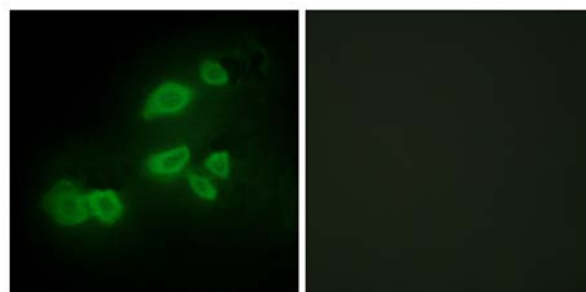
Scherl-Mostageer M., Oncogene 20:4402-4408(2001).

Hooper J.D., Oncogene 22:1783-1794(2003).

Bhatt A.S., Oncogene 24:5333-5343(2005).



Western blot analysis of extracts from COLO205 cells, using CDCP1 antibody.



Immunofluorescence analysis of HepG2 cells, using CDCP1 antibody.

For Research Use Only