



## ES8L2 Antibody

E11-11699C

**Catalog Number:** E11-11699 C

**Concentration:** 1mg/ml

**Swiss-Prot No.:** Q9H6S3

**Other Names:** Epidermal growth factor receptor kinase substrate 8-like protein 2, Epidermal growth factor receptor pathway substrate 8-related protein 2, EPS8-like protein 2, EPS8L2, EPS8R2, PP13181

**Storage/Stability:** Store at -20°C/1 year

**Form of Antibody:** Rabbit IgG in phosphate buffered saline (without  $Mg^{2+}$  and  $Ca^{2+}$ ), pH 7.4, 150mM NaCl, 0.02% sodium azide and 50% glycerol.

**Immunogen:** The antiserum was produced against synthesized peptide derived from internal of human

ES8L2.

**Purification:** The antibody was affinity-purified from rabbit antiserum by affinity-chromatography using epitope-specific immunogen.

**Specificity:** ES8L2 antibody detects endogenous levels of total ES8L2 protein.

**Reactivity:** Human, Mouse

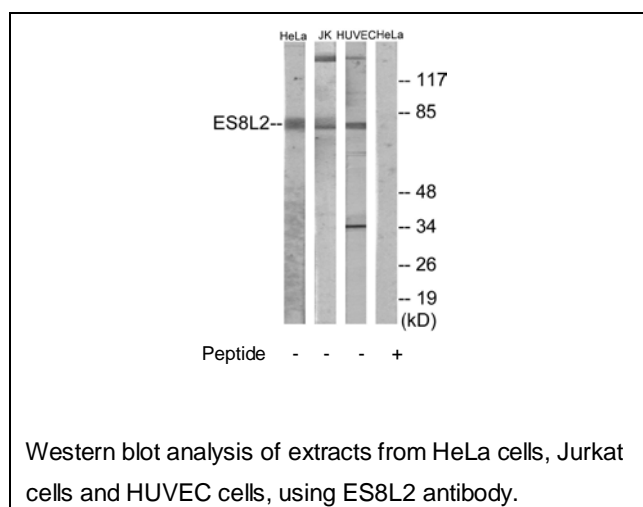
**Applications:** WB: 1:500~1:1000 ELISA: 1:40000

**References:**

Tocchetti A., Genomics 81:234-244(2003).

Wan D., Proc. Natl. Acad. Sci. U.S.A. 101:15724-15729(2004).

Offenhaeuser N., Mol. Biol. Cell 15:91-98(2004).



**For Research Use Only**