



## CLK4 Antibody

E11-11711C

**Catalog Number:** E11-11717 C

**Concentration:** 1mg/ml

**Swiss-Prot No.:** Q9HAZ1

**Other Names:** Dual specificity protein kinase CLK4, EC 2.7.12.1, CDC-like kinase 4, CLK4

**Storage/Stability:** Store at -20°C/1 year

**Form of Antibody:** Rabbit IgG in phosphate buffered saline (without  $Mg^{2+}$  and  $Ca^{2+}$ ), pH 7.4, 150mM NaCl, 0.02% sodium azide and 50% glycerol.

**Immunogen:** The antiserum was produced against synthesized peptide derived from internal of human CLK4.

**Purification:** The antibody was affinity-purified from

rabbit antiserum by affinity-chromatography using epitope-specific immunogen.

**Specificity:** CLK4 antibody detects endogenous levels of total CLK4 protein.

**Reactivity:** Human, Mouse

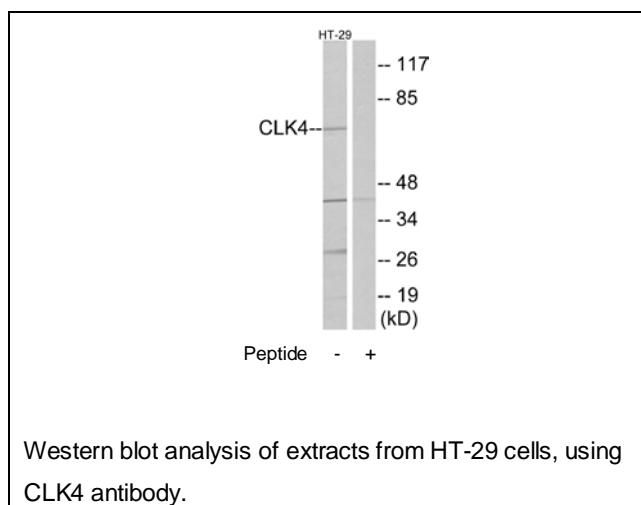
**Applications:** WB: 1:500~1:1000 ELISA: 1:1000

**References:**

Schultz J., Genomics 71:368-370(2001).

McNally T., Protein Sci. 12:1562-1566(2003).

Kantham L., Biochem. Biophys. Res. Commun. 304:125-129(2003).



**For Research Use Only**