



DCP1A Antibody

E11-11740C

Catalog Number: E11-11740 C

Concentration: 1mg/ml

Swiss-Prot No.: Q9NPI6

Other Names: mRNA-decapping enzyme 1A, EC 3.-.-., Transcription factor SMIF, Smad4-interacting transcriptional co-activator, DCP1A, SMIF

Storage/Stability: Store at -20°C/1 year

Form of Antibody: Rabbit IgG in phosphate buffered saline (without Mg^{2+} and Ca^{2+}), pH 7.4, 150mM NaCl, 0.02% sodium azide and 50% glycerol.

Immunogen: The antiserum was produced against synthesized peptide derived from internal of human

DCP1A.

Purification: The antibody was affinity-purified from rabbit antiserum by affinity-chromatography using epitope-specific immunogen.

Specificity: DCP1A antibody detects endogenous levels of total DCP1A protein.

Reactivity: Human, Mouse

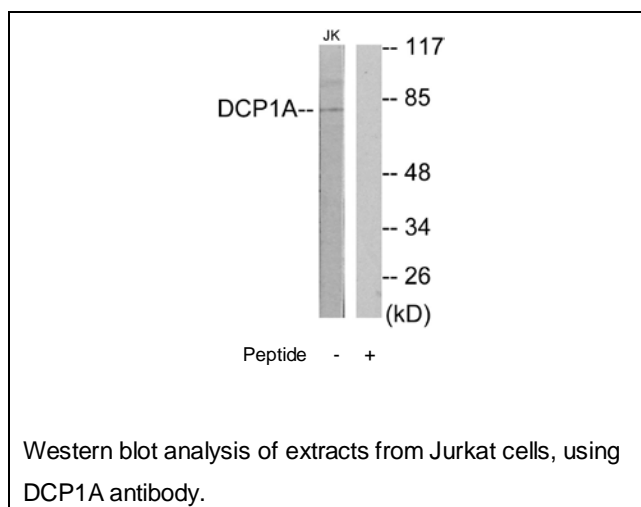
Applications: WB: 1:500~1:1000 ELISA: 1:20000

References:

Lykke-Andersen J., Mol. Cell. Biol. 22:8114-8121(2002).

Bai R.-Y., Nat. Cell Biol. 4:181-190(2002).

Ota T., Nat. Genet. 36:40-45(2004).



For Research Use Only