



BCA3 Antibody

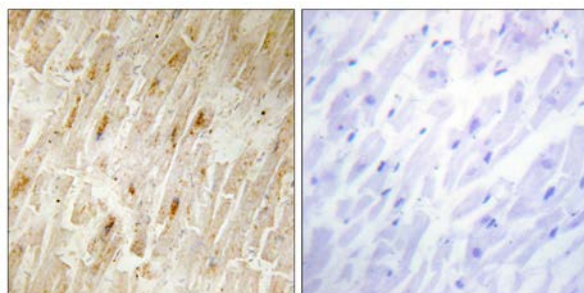
E11-11741C

Catalog Number: E11-11741 C**Concentration:** 1mg/ml**Swiss-Prot No.:** Q9NQ31**Other Names:** Breast cancer-associated gene 3 protein;
PKA-interacting protein; AKIP1**Storage/Stability:** Store at -20°C/1 year**Form of Antibody:** Rabbit IgG in phosphate buffered
saline (without Mg^{2+} and Ca^{2+}), pH 7.4, 150mM NaCl,
0.02% sodium azide and 50% glycerol.**Immunogen:** The antiserum was produced against
synthesized peptide derived from internal of human
BCA3.**Purification:** The antibody was affinity-purified from
rabbit antiserum by affinity-chromatography using
epitope-specific immunogen.**Specificity:** BCA3 antibody detects endogenous levels of
total BCA3 protein.**Reactivity:** Human**Applications:** WB: 1:500~1:1000 IHC: 1:50~1:100
ELISA: 1:20000**References:**

Kitching R., Biochim. Biophys. Acta 1625:116-121(2003).

Amid C., Cytogenet. Cell Genet. 93:284-290(2001).

Ota T., Nat. Genet. 36:40-45(2004).

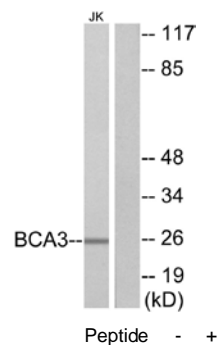


Peptide

-

+

Immunohistochemistry analysis of paraffin-embedded
human heart tissue using BCA3 antibody.



Peptide - +

Western blot analysis of extracts from
Jurkat cells, using BCA3 antibody.