



DUS2L Antibody

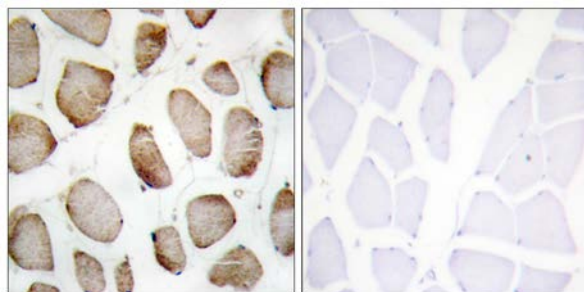
E11-11772C

Catalog Number: E11-11772 C**Concentration:** 1mg/ml**Swiss-Prot No.:** Q9NX74**Other Names:** tRNA-dihydrouridine synthase 2-like, EC 1.-.-.-, hDUS2, Up-regulated in lung cancer, URLC8, DUS2L, DUS2**Storage/Stability:** Store at -20°C/1 year**Form of Antibody:** Rabbit IgG in phosphate buffered saline (without Mg^{2+} and Ca^{2+}), pH 7.4, 150mM NaCl, 0.02% sodium azide and 50% glycerol.**Immunogen:** The antiserum was produced against synthesized peptide derived from C-terminal of human DUS2L.**Purification:** The antibody was affinity-purified from rabbit antiserum by affinity-chromatography using epitope-specific immunogen.**Specificity:** DUS2L antibody detects endogenous levels of total DUS2L protein.**Reactivity:** Human, Mouse**Applications:** WB: 1:500~1:1000 IHC: 1:50~1:100
ELISA: 1:20000**References:**

Ota T., Nat. Genet. 36:40-45(2004).

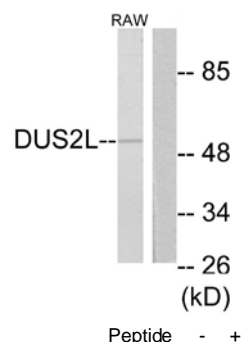
The MGC Project Team; Genome Res. 14:2121-2127(2004).

Kato T., Cancer Res. 65:5638-5646(2005).



Peptide - +

Immunohistochemistry analysis of paraffin-embedded human skeletal muscle using DUS2L antibody.



Western blot analysis of extracts from RAW264.7 cells, using DUS2L antibody.