



ARMX1 Antibody

E11-11801C

Catalog Number: E11-11801 C

Concentration: 1mg/ml

Swiss-Prot No.: Q9P291

Other Names: Armadillo repeat-containing X-linked protein 1, Protein ALEX1, ARM protein lost in epithelial cancers on chromosome X 1, ARMCX1, ALEX1, AD032

Storage/Stability: Store at -20°C/1 year

Form of Antibody: Rabbit IgG in phosphate buffered saline (without Mg^{2+} and Ca^{2+}), pH 7.4, 150mM NaCl, 0.02% sodium azide and 50% glycerol.

Immunogen: The antiserum was produced against synthesized peptide derived from internal of human ARMX1.

Purification: The antibody was affinity-purified from rabbit antiserum by affinity-chromatography using epitope-specific immunogen.

Specificity: ARMX1 antibody detects endogenous levels of total ARMX1 protein.

Reactivity: Human

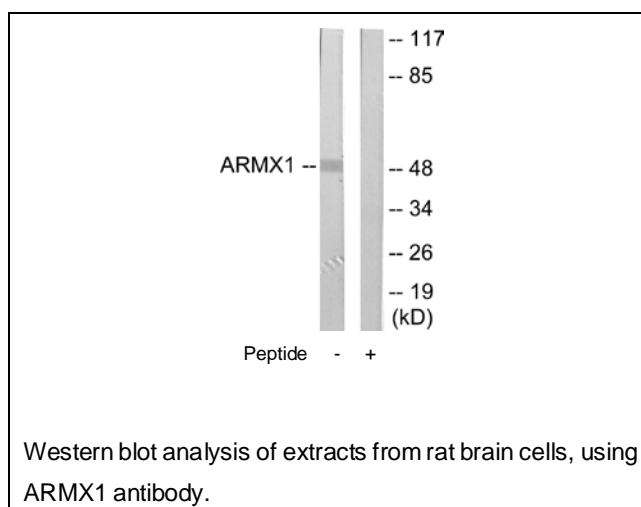
Applications: WB: 1:500~1:1000 ELISA: 1:20000

References:

Kurochkin I.V., Biochem. Biophys. Res. Commun. 280:340-347(2001).

Ota T., Nat. Genet. 36:40-45(2004).

Ross M.T., Nature 434:325-337(2005).



For Research Use Only