



SSB (Phospho-Ser366) Antibody

E11-1181A

Catalog Number: E11-1181A**Concentration:** 1mg/ml**Swiss-Prot No.:** P05455**Other Names:** La antigen, La autoantigen, La ribonucleoprotein, Lupus La protein, SS-B, Sjogren syndrome type B antigen**All Sites:** Human: Ser366**Storage/Stability:** Store at -20°C/1 year**Form of Antibody:** Rabbit IgG in phosphate buffered saline (without Mg^{2+} and Ca^{2+}), pH 7.4, 150mM NaCl, 0.02% sodium azide and 50% glycerol.**Immunogen:** The antiserum was produced against synthesized phosphopeptide derived from human SSB around the phosphorylation site of serine 366 (F-A-S^P-D-D).**Purification:** The antibody was affinity-purified from

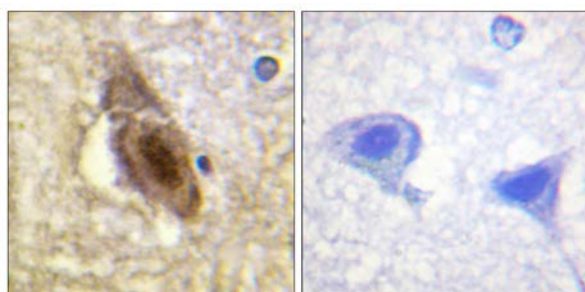
rabbit antiserum by affinity-chromatography using epitope-specific phosphopeptide. The antibody against non-phosphopeptide was removed by chromatography using non-phosphopeptide corresponding to the phosphorylation site.

Specificity: SSB (Phospho-Ser366) antibody detects endogenous levels of SSB only when phosphorylated at serine 366.**Reactivity:** Human**Applications:** WB: 1:500~1:1000 IHC: 1:50~1:100
IF: 1:100~1:500 ELISA: 1:40000**References:**

Fan H., Cell 88:707-715(1997).

Fouraux M.A., RNA 8:1428-1443(2002).

Olsen J.V., Cell 127:635-648(2006).

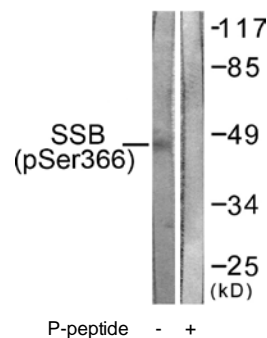


P-peptide

-

+

Immunohistochemistry analysis of paraffin-embedded human brain tissue using SSB (Phospho-Ser366) antibody.



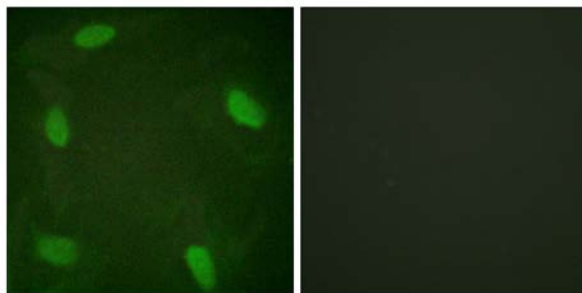
P-peptide

-

+

Western blot analysis of extracts from 293 cells, using SSB (Phospho-Ser366) antibody.

For Research Use Only



Forskolin

+

-

Immunofluorescence analysis of HeLa cells, treated with Forskolin (40nM, 30mins), using SSB (Phospho-Ser366) antibody.