



## MORF4L1 Antibody

E11-11822C

**Catalog Number:** E11-11822C

**Concentration:** 1mg/ml

**Swiss-Prot No.:** Q9UBU8

**Other Names:** Mortality factor 4-like protein 1, MORF-related gene 15 protein, MORF-related gene 15 protein, MSL3-1 protein, MORF4L1, MRG15, FWP006, HSPC008, HSPC061, PP368

**Storage/Stability:** Store at -20 °C/1 year

**Form of Antibody:** Rabbit IgG in phosphate buffered saline (without  $Mg^{2+}$  and  $Ca^{2+}$ ), pH 7.4, 150mM NaCl, 0.02% sodium azide and 50% glycerol.

**Immunogen:** The antiserum was produced against synthesized peptide derived from internal of human MORF4L1.

**Purification:** The antibody was affinity-purified from rabbit antiserum by affinity-chromatography using

epitope-specific immunogen.

**Specificity:** MORF4L1 antibody detects endogenous levels of total MORF4L1 protein.

**Reactivity:** Human, Mouse

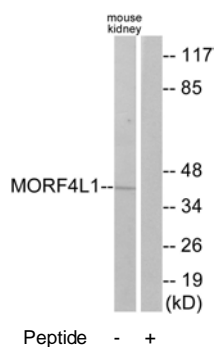
**Applications:** WB: 1:500~1:1000 IF: 1:100~1:500  
ELISA: 1:20000

**References:**

Wan D., Proc. Natl. Acad. Sci. U.S.A. 101:15724-15729(2004).

Zhang Q.-H., Genome Res. 10:1546-1560(2000).

Cai Y., J. Biol. Chem. 278:42733-42736(2003).



Western blot analysis of extracts from mouse kidney cells, using MORF4L1 antibody.



Immunofluorescence analysis of HepG2 cells, using MORF4L1 antibody.

**For Research Use Only**