



## EPHA6 Antibody

E11-11829C

**Catalog Number:** E11-11829C**Concentration:** 1mg/ml**Swiss-Prot No.:** Q9UF33**Other Names:** Ephrin type-A receptor 6 [Precursor], EC 2.7.10.1, Tyrosine-protein kinase receptor EHk-2, EPH homology kinase 2, EPHA6, EHk2**Storage/Stability:** Store at -20°C/1 year**Form of Antibody:** Rabbit IgG in phosphate buffered saline (without Mg<sup>2+</sup> and Ca<sup>2+</sup>), pH 7.4, 150mM NaCl, 0.02% sodium azide and 50% glycerol.**Immunogen:** The antiserum was produced against synthesized peptide derived from internal of human EPHA6.**Purification:** The antibody was affinity-purified from

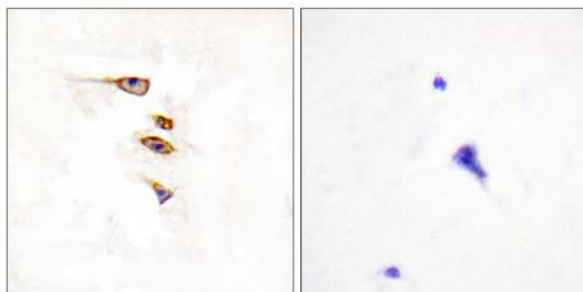
rabbit antiserum by affinity-chromatography using epitope-specific immunogen.

**Specificity:** EPHA6 antibody detects endogenous levels of total EPHA6 protein.**Reactivity:** Human (Identities = 100%, Positives = 100%);  
Mouse (Identities = 100%, Positives = 100%);  
Rat (Identities = 100%, Positives = 100%)**Applications:** IHC: 1:50~1:100 IF: 1:100~1:500  
ELISA: 1:20000**References:**

The German cDNA consortium; Submitted (JAN-2005) to the EMBL/GenBank/DDBJ databases.

Muzny D.M., Nature 440:1194-1198(2006).

Hafner C., Clin. Chem. 50:490-499(2004).

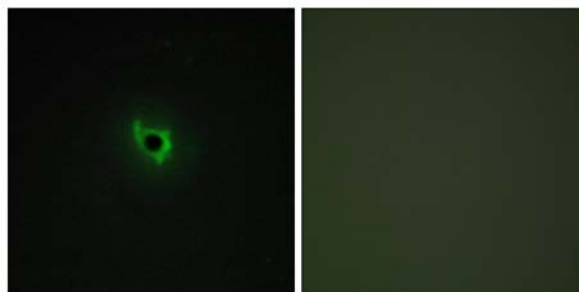


Peptide

-

+

Immunohistochemistry analysis of paraffin-embedded human brain tissue, using EPHA6 antibody.



Peptide

-

+

Immunofluorescence analysis of COS-7 cells, using EPHA6 antibody.

**For Research Use Only**