



MOK Antibody

E11-11907C

Catalog Number: E11-11907 C

Concentration: 1mg/ml

Swiss-Prot No.: Q9UQ07

Other Names: EC 2.7.11.22, MOK protein kinase, RAGE, RAGE-1, RAGE1, kinase MOK

Storage/Stability: Store at -20°C/1 year

Form of Antibody: Rabbit IgG in phosphate buffered saline (without Mg^{2+} and Ca^{2+}), pH 7.4, 150mM NaCl, 0.02% sodium azide and 50% glycerol.

Immunogen: The antiserum was produced against synthesized peptide derived from internal of human MOK.

Purification: The antibody was affinity-purified from

rabbit antiserum by affinity-chromatography using epitope-specific immunogen.

Specificity: MOK antibody detects endogenous levels of total MOK protein.

Reactivity: Human

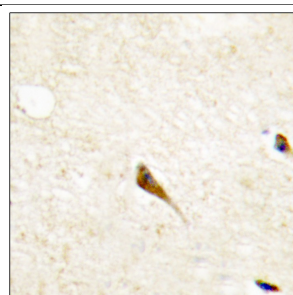
Applications: WB: 1:500~1:1000 IHC: 1:50~1:100
ELISA: 1:1000

References:

Miyata Y., Genes Cells 4:299-309(1999).

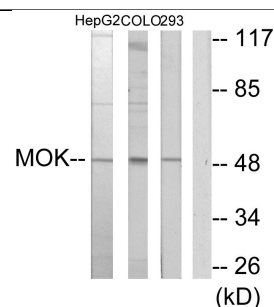
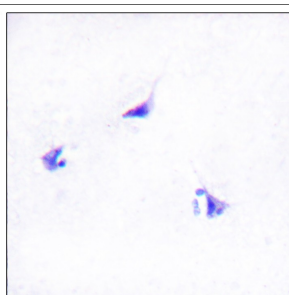
Gaugler B., Immunogenetics 44:323-330(1996).

The MGC Project Team; Genome Res. 14:2121-2127(2004).



Peptide - +

Immunohistochemistry analysis of paraffin-embedded human brain tissue using MOK antibody.



Peptide - - - +

Western blot analysis of extracts from HepG2 cells, COLO205 cells and 293 cells, using MOK antibody.

For Research Use Only