



CDK11 Antibody

E11-11909C

Catalog Number: E11-11909C

Concentration: 1mg/ml

Swiss-Prot No.: Q9UQ88/P21127

Other Names: Cyclin-dependent kinase 11A,
EC=2.7.11.22, Cell division cycle 2-like protein kinase 2,
Cell division protein kinase 11A,
Galactosyltransferase-associated protein kinase
p58/GTA, PITSLRE serine/threonine-protein kinase
CDC2L2

Storage/Stability: Store at -20°C/1 year

Form of Antibody: Rabbit IgG in phosphate buffered
saline (without Mg²⁺ and Ca²⁺), pH 7.4, 150mM NaCl,
0.02% sodium azide and 50% glycerol.

Immunogen: The antiserum was produced against

synthesized peptide derived from internal of human
CDK11.

Purification: The antibody was affinity-purified from
rabbit antiserum by affinity-chromatography using
epitope-specific immunogen.

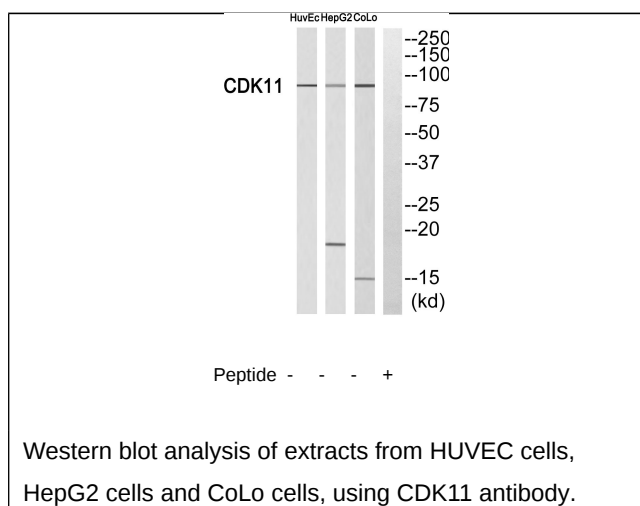
Specificity: CDK11 antibody detects endogenous levels
of total CDK11 protein.

Reactivity: Human

Applications: WB: 1:500~1:1000 ELISA: 1:10000

References:

Xiang J., J. Biol. Chem. 269:15786-15794(1994)
[PubMed: 8195233]. Gururajan R., Genome Res.
8:929-939(1998) [PubMed: 9750192]. Gregory S.G.,
Nature 441:315-321(2006) [PubMed: 16710414].



For Research Use Only