



## ASF1A Antibody

E11-11928C

**Catalog Number:** E11-11928 C

**Concentration:** 1mg/ml

**Swiss-Prot No.:** Q9Y294

**Other Names:** Histone chaperone ASF1A, Anti-silencing function protein 1 homolog A, hAsf1, hAsf1a, CCG1-interacting factor A, CIA, hCIA, ASF1A, CGI-98, HSPC146

**Storage/Stability:** Store at -20°C/1 year

**Form of Antibody:** Rabbit IgG in phosphate buffered saline (without  $Mg^{2+}$  and  $Ca^{2+}$ ), pH 7.4, 150mM NaCl, 0.02% sodium azide and 50% glycerol.

**Immunogen:** The antiserum was produced against synthesized peptide derived from internal of human

ASF1A.

**Purification:** The antibody was affinity-purified from rabbit antiserum by affinity-chromatography using epitope-specific immunogen.

**Specificity:** ASF1A antibody detects endogenous levels of total ASF1A protein.

**Reactivity:** Human, Mouse

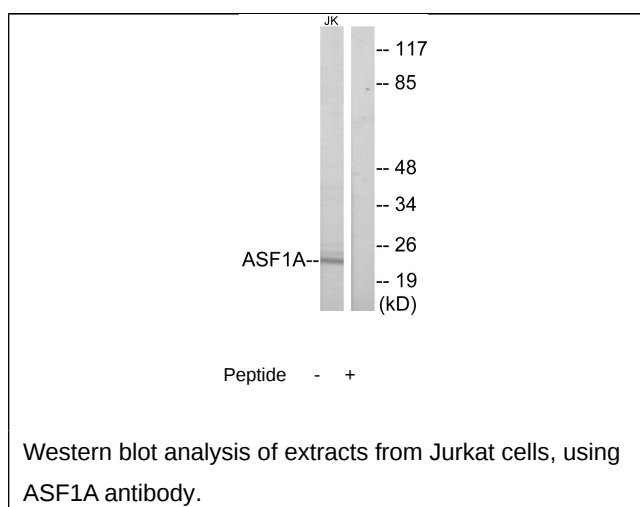
**Applications:** WB: 1:500~1:1000 ELISA: 1:20000

**References:**

Munakata T., Genes Cells 5:221-233(2000).

Sillje H.H.W., Curr. Biol. 11:1068-1073(2001).

Lai C.-H., Genome Res. 10:703-713(2000).



**For Research Use Only**