



## Casein Kinase II $\alpha$ (Phospho-Tyr255)Antibody

E11-1192A

**Catalog Number:** E11-1192A

**Concentration:** 1mg/ml

**Swiss-Prot No.:** P68400

**Other Names:** Casein kinase II, alpha chain; CK II; CK2-alpha1; CK2A1; CKIIA; CSK21; CSNK2A1; EC 2.7.11.1; kinase CK2-alpha1

**All Sites:** Human: Tyr255; Mouse: Tyr255; Rat: Tyr255

**Storage/Stability:** Store at -20 °C/1 year

**Form of Antibody:** Rabbit IgG in phosphate buffered saline (without Mg<sup>2+</sup> and Ca<sup>2+</sup>), pH 7.4, 150mM NaCl, 0.02% sodium azide and 50% glycerol.

**Immunogen:** The antiserum was produced against synthesized phosphopeptide derived from human Casein Kinase II  $\alpha$  around the phosphorylation site of tyrosine 255 (D-L-Y<sup>P</sup>-D-Y).

**Purification:** The antibody was affinity-purified from rabbit antiserum by affinity-chromatography using epitope-specific phosphopeptide. The antibody against non-phosphopeptide was removed by chromatography using non-phosphopeptide corresponding to the phosphorylation site.

**Specificity:** Casein Kinase II  $\alpha$  (Phospho-Tyr255) antibody detects endogenous levels of Casein Kinase II  $\alpha$  only when phosphorylated at tyrosine 255.

**Reactivity:** Human, Mouse, Rat

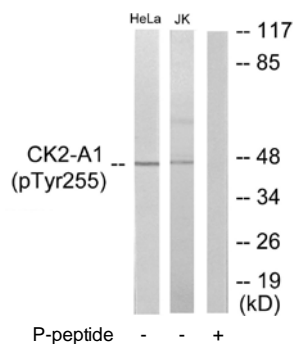
**Applications:** WB: 1:500~1:1000 ELISA: 1:10000

### References:

Meisner H., Biochemistry 28:4072-4076(1989).

Lozeman F.J., Biochemistry 29:8436-8447(1990).

Deloukas P., Nature 414:865-871(2001).



Western blot analysis of extracts from HeLa cells and Jurkat cells, using Casein Kinase II  $\alpha$  (Phospho-Tyr255) antibody.

**For Research Use Only**