



## CD227/MUC1 (Phospho-Tyr1229) Antibody

E11-1193A

**Catalog Number:** E11-1193A

**Concentration:** 1mg/ml

**Swiss-Prot No.:** P15941

**Other Names:** Breast carcinoma-associated antigen DF3; Carcinoma-associated mucin; CD227; EMA; Episialin; H23AG; MUC-1; mucin 1; Mucin 1 precursor; mucin 1, transmembrane; Peanut-reactive urinary mucin; PEM; PEMT; Polymorphic epithelial mucin; PUM; Tumor-associated epithelial membrane antigen; Tumor-associated mucin

**All Sites:** Human: Tyr1229

**Storage/Stability:** Store at -20°C/1 year

**Form of Antibody:** Rabbit IgG in phosphate buffered saline (without  $Mg^{2+}$  and  $Ca^{2+}$ ), pH 7.4, 150mM NaCl, 0.02% sodium azide and 50% glycerol.

**Immunogen:** The antiserum was produced against synthesized phosphopeptide derived from human CD227/MUC1 around the phosphorylation site of tyrosine

1229 (S-P-Y<sup>P</sup>-E-K).

**Purification:** The antibody was affinity-purified from rabbit antiserum by affinity-chromatography using epitope-specific phosphopeptide. The antibody against non-phosphopeptide was removed by chromatography using non-phosphopeptide corresponding to the phosphorylation site.

**Specificity:** CD227/MUC1 (Phospho-Tyr1229) antibody detects endogenous levels of CD227/MUC1 only when phosphorylated at tyrosine 1229.

**Reactivity:** Human (Identities = 100%, Positives = 100%)

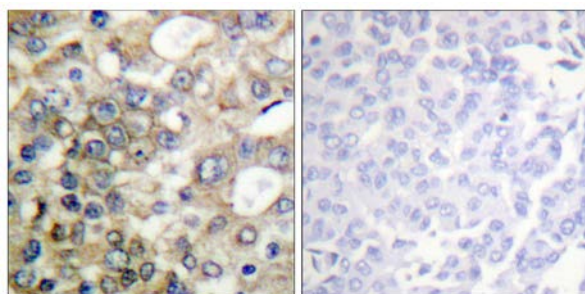
**Applications:** WB: 1:500~1:1000 IHC: 1:50~1:100  
IF: 1:100~1:500 ELISA: 1:1000

### References:

Lan M.S., J. Biol. Chem. 265:15294-15299(1990).

Ligtenberg M.J.L., J. Biol. Chem. 265:5573-5578(1990).

Gendler S.J., J. Biol. Chem. 265:15286-15293(1990).

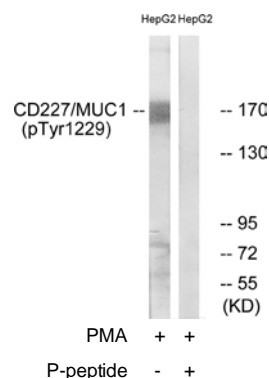


P-peptide

-

+

Immunohistochemistry analysis of paraffin-embedded human breast carcinoma tissue using CD227/MUC1 (Phospho-Tyr1229) antibody.



Western blot analysis of extracts from HepG2 cells, treated with PMA (125ng/ml, 30mins), using CD227/MUC1 (Phospho-Tyr1229) antibody.

**For Research Use Only**



P-peptide

-

+

Immunofluorescence analysis of HepG2 cells, using  
CD227/MUC1 (Phospho-Tyr1229) antibody.