



CD227/MUC1 Antibody

E11-1193B

Catalog Number: E11-1193B

Concentration: 1mg/ml

Swiss-Prot No.: P15941

Other Names: Breast carcinoma-associated antigen DF3, CD227, Carcinoma-associated mucin, EMA, Episialin, H23AG, MUC-1, MUC1, Mucin 1 precursor, PEM, PEMT, PUM, Peanut-reactive urinary mucin, Polymorphic epithelial mucin, Tumor-associated epithelial membrane antigen, Tumor-associated mucin

Storage/Stability: Store at -20°C/1 year

Form of Antibody: Rabbit IgG in phosphate buffered saline (without Mg^{2+} and Ca^{2+}), pH 7.4, 150mM NaCl, 0.02% sodium azide and 50% glycerol.

Immunogen: The antiserum was produced against synthesized peptide derived from Internal of human CD227/MUC1.

Purification: The antibody was affinity-purified from rabbit antiserum by affinity-chromatography using epitope-specific immunogen.

Specificity: CD227/MUC1 antibody detects endogenous levels of total CD227/MUC1 protein.

Reactivity: Human (Identities = 100%, Positives = 100%)

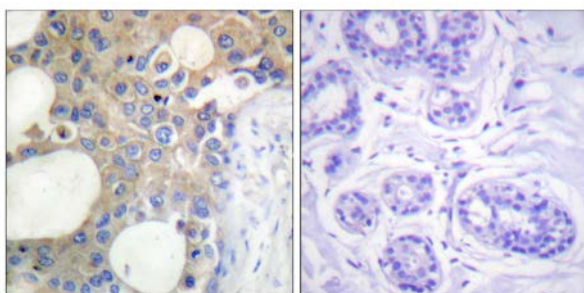
Applications: IHC: 1:50~1:100 IF: 1:100~1:500 ELISA: 1:1000

References:

M. Wykes. J. Leukoc. Biol., Oct 2002; 72: 692.

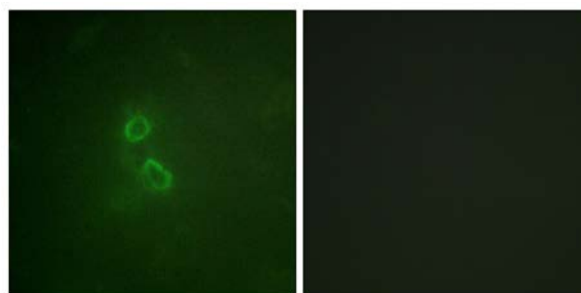
Gargi D. Basu. AACR Meeting Abstracts, Apr 2006; 2006: 1198.

Baldev Vasir. J. Immunol., Feb 2005; 174: 2376 - 2386.



Peptide - +

Immunohistochemistry analysis of paraffin-embedded human breast carcinoma tissue using CD227/MUC1 antibody.



Peptide - +

Immunofluorescence analysis of COS7 cells, using CD227/MUC1 antibody.

For Research Use Only