



## Casein Kinase I $\alpha$ (Phospho-Thr321)Antibody

E11-1194A

**Catalog Number:** E11-1194A**Concentration:** 1mg/ml**Swiss-Prot No.:** P48729**Other Names:** CK1- $\alpha$ , CKI- $\alpha$ , CSNK1A1, Casein kinase I,  $\alpha$  isoform, EC 2.7.11.1, KC1A, kinase**All Sites:** Human: Thr321; Mouse: Thr321; Rat: Thr321**Storage/Stability:** Store at -20 °C/1 year**Form of Antibody:** Rabbit IgG in phosphate buffered saline (without Mg<sup>2+</sup> and Ca<sup>2+</sup>), pH 7.4, 150mM NaCl, 0.02% sodium azide and 50% glycerol.**Immunogen:** The antiserum was produced against synthesized phosphopeptide derived from human Casein Kinase I  $\alpha$  around the phosphorylation site of threonine 321 (A-Q-T<sup>P</sup>-P-T).**Purification:** The antibody was affinity-purified from

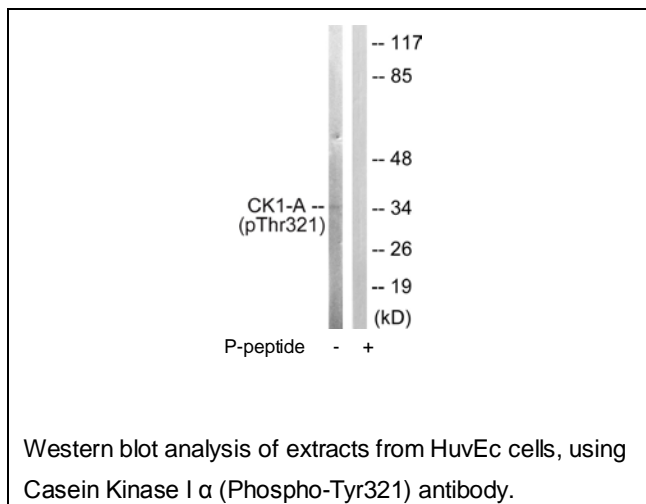
rabbit antiserum by affinity-chromatography using epitope-specific phosphopeptide. The antibody against non-phosphopeptide was removed by chromatography using non-phosphopeptide corresponding to the phosphorylation site.

**Specificity:** Casein Kinase I  $\alpha$  (Phospho-Tyr321) antibody detects endogenous levels of Casein Kinase I  $\alpha$  only when phosphorylated at threonine 321.**Reactivity:** Human, Mouse, Rat**Applications:** WB: 1:500~1:1000 ELISA: 1:10000**References:**

Tapia C., FEBS Lett. 349:307-312(1994).

Fish K.J., J. Biol. Chem. 270:14875-14883(1995).

Liu C., I 108:837-847(2002).

**For Research Use Only**