



## EID1 Antibody

E11-11984C

**Catalog Number:** E11-11984 C

**Concentration:** 1mg/ml

**Swiss-Prot No.:** Q9Y6B2

**Other Names:** EP300-interacting inhibitor of differentiation 1, EID-1, E1A-like inhibitor of differentiation 1, CREBBP/EP300 inhibitory protein 1, 21 kDa pRb-associated protein, EID1, C15orf3, CRI1, RBP21, PNAS-22, PTD014

**Storage/Stability:** Store at -20°C/1 year

**Form of Antibody:** Rabbit IgG in phosphate buffered saline (without Mg<sup>2+</sup> and Ca<sup>2+</sup>), pH 7.4, 150mM NaCl, 0.02% sodium azide and 50% glycerol.

**Immunogen:** The antiserum was produced against

synthesized peptide derived from internal of human EID1.

**Purification:** The antibody was affinity-purified from rabbit antiserum by affinity-chromatography using epitope-specific immunogen.

**Specificity:** EID1 antibody detects endogenous levels of total EID1 protein.

**Reactivity:** Human

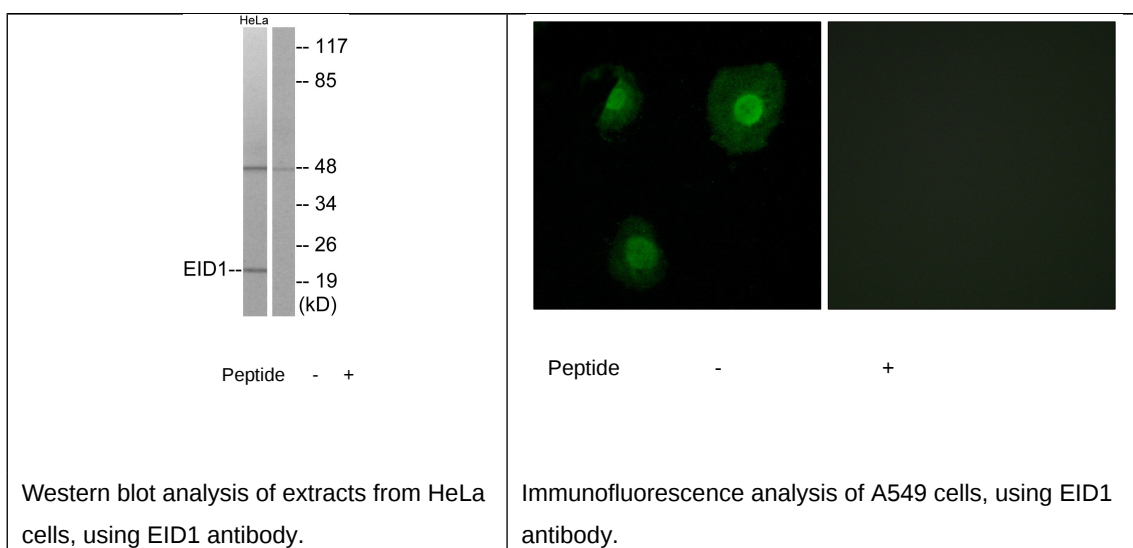
**Applications:** WB: 1:500~1:1000 IF: 1:100~1:500  
ELISA: 1:10000

**References:**

MacLellan W.R., Mol. Cell. Biol. 20:8903-8915(2000).

Wen H., Ao S.; Gene 263:85-92(2001).

Ota T., Nat. Genet. 36:40-45(2004).



**For Research Use Only**