



## GFAP (Phospho-Ser38) Antibody

E11-1205A

**Catalog Number:** E11-1205A**Concentration:** 1mg/ml**Swiss-Prot No.:** P14136**Other Names:** Glial fibrillary acidic protein, astrocyte**All Sites:** Human: Ser38; Mouse: Ser35**Storage/Stability:** Store at -20 °C/1 year**Form of Antibody:** Rabbit IgG in phosphate buffered saline (without  $Mg^{2+}$  and  $Ca^{2+}$ ), pH 7.4, 150mM NaCl, 0.02% sodium azide and 50% glycerol.**Immunogen:** The antiserum was produced against synthesized phosphopeptide derived from human GFAP around the phosphorylation site of serine 38 (R-L-S<sup>P</sup>-L-A).**Purification:** The antibody was affinity-purified from rabbit antiserum by affinity-chromatography using

epitope-specific phosphopeptide. The antibody against non-phosphopeptide was removed by chromatography using non-phosphopeptide corresponding to the phosphorylation site.

**Specificity:** GFAP (Phospho-Ser38) antibody detects endogenous levels of GFAP only when phosphorylated at serine 38.**Reactivity:** Human, Mouse**Applications:** WB: 1:500~1:1000 IHC: 1:50~1:100

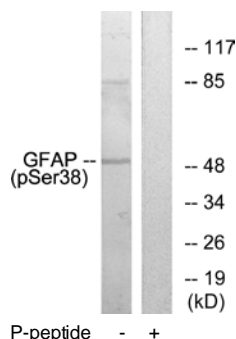
IF: 1:100~1:500 ELISA: 1:5000

**References:**

Brenner M., Brain Res. Mol. Brain Res. 7:277-286(1990).

Ota T., Nat. Genet. 36:40-45(2004).

Nielsen A.L., J. Biol. Chem. 277:29983-29991(2002).

**For Research Use Only**