



ARRDC2 Antibody

E11-12060C

Catalog Number: E11-12060 C

Concentration: 1mg/ml

Swiss-Prot No.: Q8TBH0

Other Names: Arrestin domain-containing protein 2, ARRDC2, PP2703

Storage/Stability: Store at -20°C/1 year

Form of Antibody: Rabbit IgG in phosphate buffered saline (without Mg^{2+} and Ca^{2+}), pH 7.4, 150mM NaCl, 0.02% sodium azide and 50% glycerol.

Immunogen: The antiserum was produced against synthesized peptide derived from internal of human ARRDC2.

Purification: The antibody was affinity-purified from rabbit antiserum by affinity-chromatography using

epitope-specific immunogen.

Specificity: ARRDC2 antibody detects endogenous levels of total ARRDC2 protein.

Reactivity: Human (Identities = 100%, Positives = 100%); Mouse (Identities = 100%, Positives = 100%)

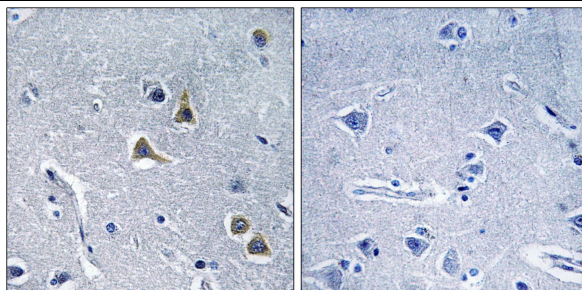
Applications: IHC: 1:50~1:100 ELISA: 1:40000

References:

Ota T., Nat. Genet. 36:40-45(2004).

Wan D., Proc. Natl. Acad. Sci. U.S.A. 101:15724-15729(2004).

The MGC Project Team, Genome Res. 14:2121-2127(2004).



Peptide - +

Immunohistochemistry analysis of paraffin-embedded human brain tissue, using ARRDC2 antibody.

For Research Use Only