



## CDH3 Antibody

E11-12101C

**Catalog Number:** E11-12101 C

**Concentration:** 1mg/ml

**Swiss-Prot No.:** P22223

**Other Names:** Cadherin-3 [Precursor], Placental cadherin, P-cadherin, CDH3, CDHP, CADH3

**Storage/Stability:** Store at -20°C/1 year

**Form of Antibody:** Rabbit IgG in phosphate buffered saline (without  $Mg^{2+}$  and  $Ca^{2+}$ ), pH 7.4, 150mM NaCl, 0.02% sodium azide and 50% glycerol.

**Immunogen:** The antiserum was produced against synthesized peptide derived from internal of human CDH3.

**Purification:** The antibody was affinity-purified from rabbit antiserum by affinity-chromatography using epitope-specific immunogen.

**Specificity:** CDH3 antibody detects endogenous levels of total CDH3 protein.

**Reactivity:** Human

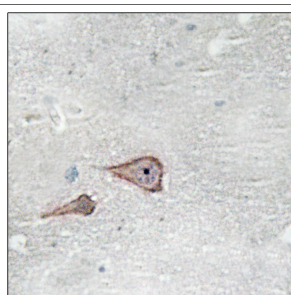
**Applications:** WB: 1:500~1:1000 IHC: 1:50~1:100  
ELISA: 1:10000

**References:**

Jarrard D.F., . Cancer Res. 3:2121-2128(1997).

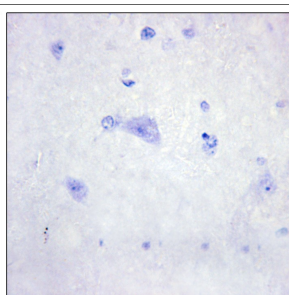
Bhatt A.S., Oncogene 24:5333-5343(2005).

Sprecher E., Nat. Genet. 29:134-136(2001).



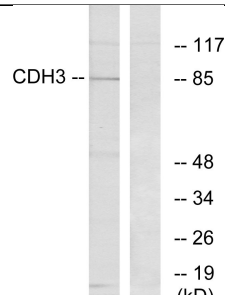
Peptide

-



+

Immunohistochemistry analysis of paraffin-embedded human brain tissue using CDH3 antibody.



CDH3 --

-- 117

-- 85

-- 48

-- 34

-- 26

-- 19

(kD)

Peptide - +

Western blot analysis of extracts from K562 cells, using CDH3 antibody.

**For Research Use Only**