



CADM1 Antibody

E11-12108C

Catalog Number: E11-12108 C

Concentration: 1mg/ml

Swiss-Prot No.: Q9BY67

Other Names: Cell adhesion molecule 1 [Precursor], Immunoglobulin superfamily member 4, Nectin-like protein 2, NECL-2, Tumor suppressor in lung cancer 1, TSLC-1, Synaptic cell adhesion molecule, Spermatogenic immunoglobulin superfamily, SgIGSF, CADM1, IGSF4, NECL2, SYNCAM, TSLC1

Storage/Stability: Store at -20°C/1 year

Form of Antibody: Rabbit IgG in phosphate buffered saline (without Mg^{2+} and Ca^{2+}), pH 7.4, 150mM NaCl, 0.02% sodium azide and 50% glycerol.

Immunogen: The antiserum was produced against

synthesized peptide derived from C-terminal of human CADM1.

Purification: The antibody was affinity-purified from rabbit antiserum by affinity-chromatography using epitope-specific immunogen.

Specificity: CADM1 antibody detects endogenous levels of total CADM1 protein.

Reactivity: Human, Mouse

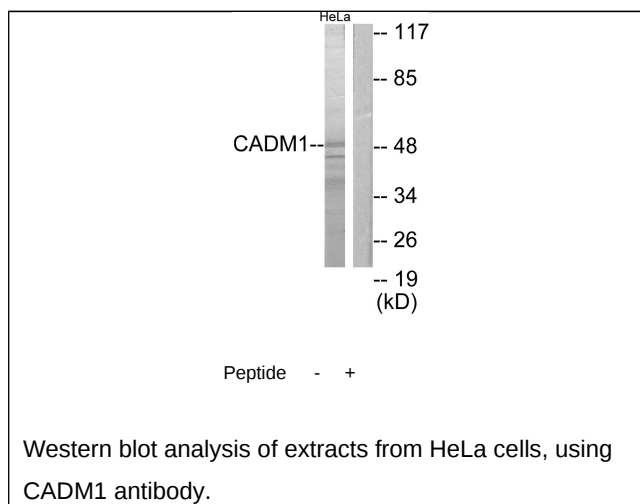
Applications: WB: 1:500~1:1000 ELISA: 1:20000

References:

Zhou Y., Biochim. Biophys. Acta 1669:142-154(2005).

Ota T., Nat. Genet. 36:40-45(2004).

Kuramochi M., Nat. Genet. 27:427-430(2001).



For Research Use Only