



## CELSR3 Antibody

E11-12184C

**Catalog Number:** E11-12184 C

**Concentration:** 1mg/ml

**Swiss-Prot No.:** Q9NYQ7

**Other Names:** Cadherin EGF LAG seven-pass G-type receptor 3 , Flamingo homolog 1, hFmi1, Multiple epidermal growth factor-like domains 2, Epidermal growth factor-like 1, CELSR3, CDHF11, EGFL1, FMI1, KIAA0812, MEGF2

**Storage/Stability:** Store at -20°C/1 year

**Form of Antibody:** Rabbit IgG in phosphate buffered saline (without  $Mg^{2+}$  and  $Ca^{2+}$ ), pH 7.4, 150mM NaCl, 0.02% sodium azide and 50% glycerol.

**Immunogen:** The antiserum was produced against

synthesized peptide derived from internal of human CELSR3.

**Purification:** The antibody was affinity-purified from rabbit antiserum by affinity-chromatography using epitope-specific immunogen.

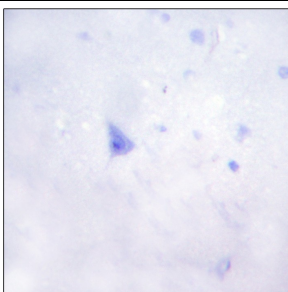
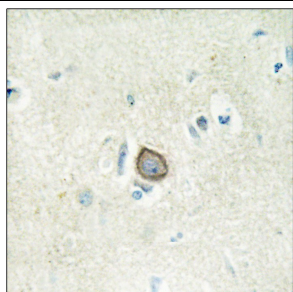
**Specificity:** CELSR3 antibody detects endogenous levels of total CELSR3 protein.

**Reactivity:** Human (Identities = 100%, Positives = 100%)

**Applications:** IHC: 1:50~1:100 IF: 1:100~1:500  
ELISA: 1:20000

**References:**

Wu Q., Proc. Natl. Acad. Sci. U.S.A. 97:3124-3129(2000).  
Nakayama M., Genomics 51:27-34(1998).

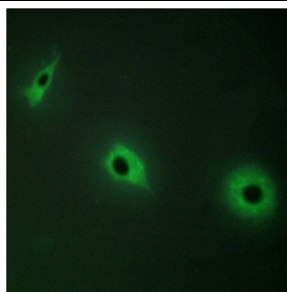


Peptide

-

+

Immunohistochemistry analysis of paraffin-embedded human brain tissue using CELSR3 antibody.



Peptide

-

+

Immunofluorescence analysis of HepG2 cells, using CELSR3 antibody.

**For Research Use Only**