



## CMKLR1 Antibody

E11-12193C

**Catalog Number:** E11-12193 C

**Concentration:** 1mg/ml

**Swiss-Prot No.:** Q99788

**Other Names:** Chemokine receptor-like 1, G-protein coupled receptor DEZ, G-protein coupled receptor ChemR23, CHEMR23, DEZ, CML1

**Storage/Stability:** Store at -20°C/1 year

**Form of Antibody:** Rabbit IgG in phosphate buffered saline (without  $Mg^{2+}$  and  $Ca^{2+}$ ), pH 7.4, 150mM NaCl, 0.02% sodium azide and 50% glycerol.

**Immunogen:** The antiserum was produced against synthesized peptide derived from internal of human CMKLR1.

**Purification:** The antibody was affinity-purified from rabbit antiserum by affinity-chromatography using epitope-specific immunogen.

**Specificity:** CMKLR1 antibody detects endogenous levels of total CMKLR1 protein.

**Reactivity:** Human, Mouse, Rat

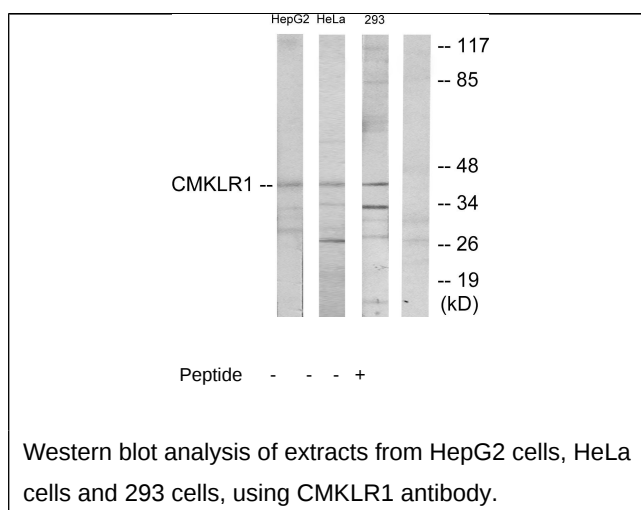
**Applications:** WB: 1:500~1:1000 ELISA: 1:20000

**References:**

Methner A., Biochem. Biophys. Res. Commun. 233:336-342(1997).

Samson M., Eur. J. Immunol. 28:1689-1700(1998).

Hillman R.T., Genome Biol. 5:RESEARCH008.1-RESEARCH008.16(2004).



**For Research Use Only**